

SERIES	DESCRIPTION	BODY NO.	PAGE NO.
Technical Tips.....			BC2-BC3
<b>PARKER STANDARD BODIES AND CAVITIES</b>			
C04-3.....	04 Size, 3 Way.....	B04-3-*	BC4
C08-2.....	08 Size, 2 Way.....	B08-2-*	BC5
C08-3.....	08 Size, 3 Way.....	B08-3-*	BC6
C08-3L.....	08 Size, 3 Way, Long.....	B08-3L-*	BC7
C08-4.....	08 Size, 4 Way.....	B08-4-*	BC8
C10-2.....	10 Size, 2 Way.....	B10-2-*	BC9
C10-3.....	10 Size, 3 Way.....	B10-3-*	BC10
C10-3L.....	10 Size, 3 Way, Long.....	B10-3L-*	BC11
C10-3S.....	10 Size, 3 Way, Short.....	B10-3S-*	BC12
C10-4.....	10 Size, 4 Way.....	B10-4-*	BC13
C12-2.....	12 Size, 2 Way.....	B12-2-*	BC14
C12-3.....	12 Size, 3 Way.....	B12-3-*	BC15
C16-2.....	16 Size, 2 Way.....	B16-2-*	BC16
C16-3.....	16 Size, 3 Way.....	B16-3-*	BC17
C16-3S.....	16 Size, 3 Way, Short.....	B16-3S-*	BC18
C16-4.....	16 Size, 4 Way.....	B16-4-*	BC19
C20-2.....	20 Size, 2 Way.....	B20-2-*	BC20
C20-3S.....	20 Size, 3 Way, Short.....	B20-3S-*	BC21
<b>COUNTERBALANCE CAVITIES AND BODIES</b>			
MHC-010.....	Single and Dual Counterbalance Bodies.....	MHC-010-*	BC22
<b>PILOT PISTON CAVITIES</b>			
10 Size.....	10 Size Cavity for Dual Check and Pilot Piston.....		BC23
<b>SPECIAL BODIES AND CAVITIES</b>			
CAV0W-2.....	2 Port.....	LB10795S.....	BC24
CAVSW-3.....	3 Port.....	LB10815S.....	BC25
CAVT11A.....	3 Port.....	LB10825S.....	BC26
2C.....	2 Port.....	LB10212S.....	BC27
2R.....	2 Port.....	LB10543S.....	BC28
2U.....	2 Port.....	LB10220S.....	BC29
3A.....	3 Port.....	LB10066S.....	BC30
3C.....	3 Port.....	LB10069S.....	BC31
3K.....	3 Port.....	LB10089S.....	BC32
3M.....	3 Port.....	LB10078S.....	BC33
3X.....	3 Port.....	LB10553S.....	BC34
4C.....	4 Port.....	LB10562S.....	BC35
5A.....	5 Port.....	LB10321S.....	BC36
53-1.....	3 Port.....	LB10318S.....	BC37
68-1.....	3 Port.....	LB10253S.....	BC38
100-1.....	5 Port.....	LB10317S.....	BC39

<b>CV</b> Check Valves
<b>SH</b> Shuttle Valves
<b>LM</b> Load/Motor Controls
<b>FC</b> Flow Controls
<b>PC</b> Pressure Controls
<b>LE</b> Logic Elements
<b>DC</b> Directional Controls
<b>SV</b> Solenoid Valves
<b>PV</b> Proportional Valves
<b>CE</b> Coils & Electronics
<b>BC</b> Bodies & Cavities
<b>TD</b> Technical Data

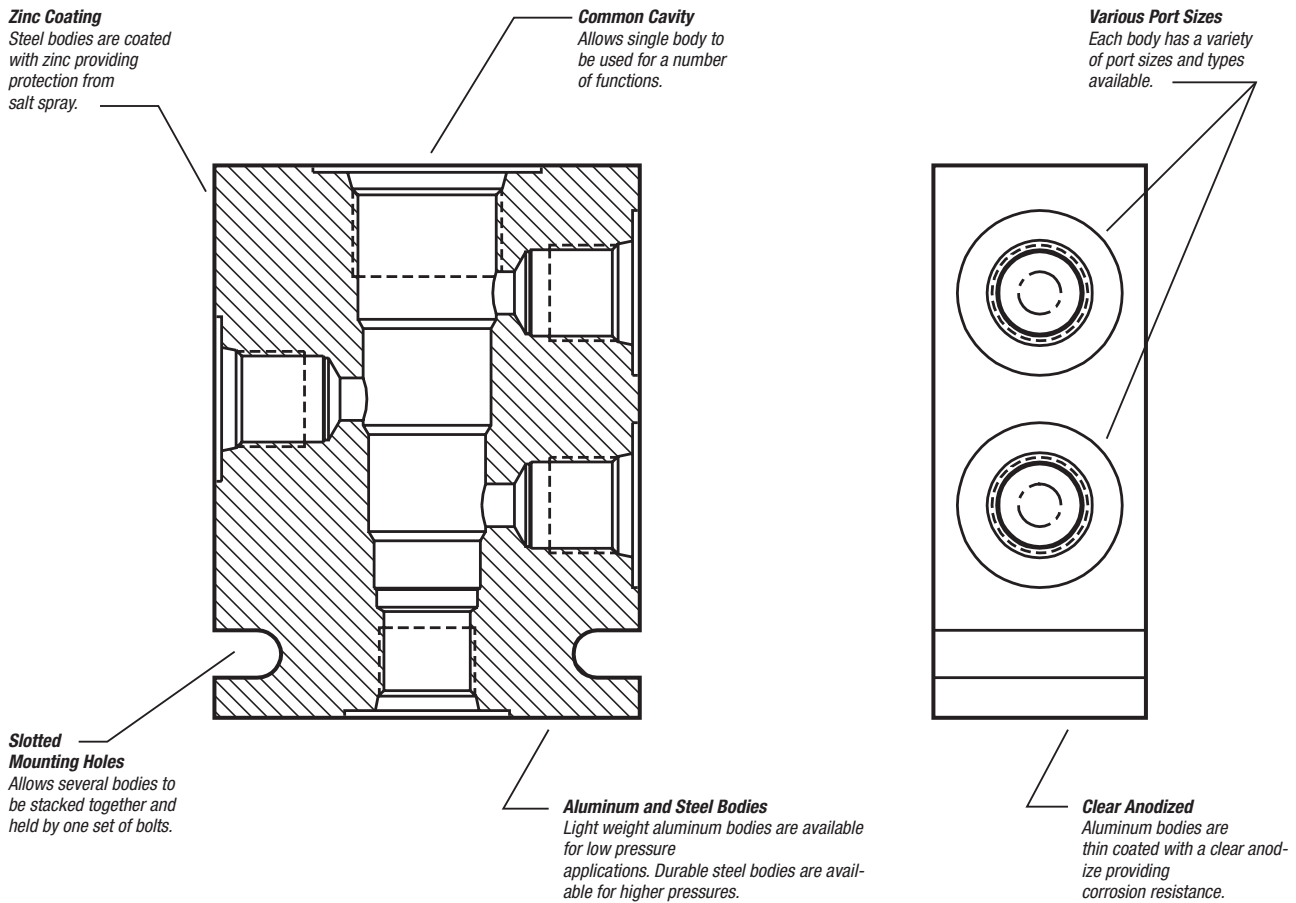
**INTRODUCTION**

This Technical Tips section is split into two parts; Standard Line Bodies and Cavities. In the standard line bodies section, we highlight the features and options of our standard offering of line bodies. In the cavity section we discuss “common” cavities.

The Technical Tips are provided to help you become more familiar with Parker Hannifin’s line of product and assist you in applying our product.

**STANDARD LINE BODIES**

Parker offers standard line bodies for each valve and cavity size. Below are some of the features of Parker’s standard line bodies.



**COMMON OPTIONS & FEATURES**

**Aluminum vs. Steel:** Parker offers standard line bodies in both aluminum and steel. Aluminum bodies are most often used for general applications. Parker’s aluminum bodies are coated with a clear anodize to provide a corrosion resistant protection. Aluminum bodies should never be used in applications above 210 bar (3000 psi.) Steel bodies are more durable and

heavier than aluminum bodies. They are ideal for applications with elevated pressures or where rugged construction is desired. Steel bodies are suitable for applications up to 350 bar (5000 psi.) Parker’s steel bodies are coated with zinc providing corrosion resistance. Zinc even provides the steel body many hours of protection from salt spray.

CV
Check Valves
SH
Shuttle Valves
LM
Load/Motor Controls
FC
Flow Controls
PC
Pressure Controls
LE
Logic Elements
DC
Directional Controls
SV
Solenoid Valves
PV
Proportional Valves
CE
Coils & Electronics
BC
Bodies & Cavities
TD
Technical Data

## Technical Tips

### COMMON OPTIONS & FEATURES (Cont.)

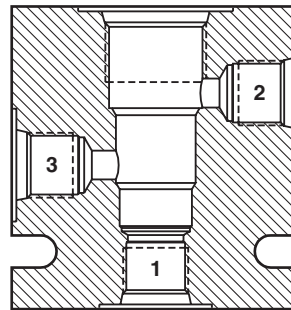
**Pressure Drop:** The pressure drop through a line body is fairly minimal. Each catalog page shows a pressure drop curve. This should be added to the pressure drop through the cartridge when trying to estimate total pressure drop for a function.

**Porting:** Parker offers a variety of port sizes and types for each line body. While NPT or pipe ports were once very popular and are still offered, we recommend SAE ports for new applications. SAE ports and fittings provide a more secure connection than pipe ports.

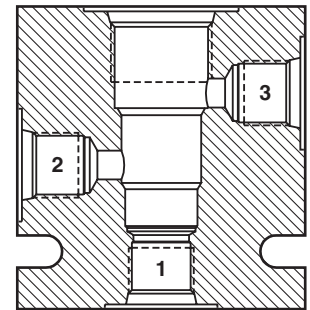
“If using an HY15-3502 or an older catalog, note we have re-numbered the ports on our 3-way line bodies” In the past, three way bodies were numbered with the nose being port 1, the middle port labeled (3), and the

## Bodies and Cavities

top port labeled (2). Over the years, this has caused some confusion, so we have relabeled the ports sequentially from the bottom. For identification, the current design will be marked with a Parker symbol like the one shown.



Previous Design



Current Design

### CAVITIES

The hole that the cartridge valve is screwed into is called a cavity. Many cartridge producers manufacture valves that fit a “common” cavity. With a “common” cavity, a valve theoretically could be removed from a cavity and replaced by another manufacturer’s product. One should be careful though to check cross drill ports and thread depths when pursuing this activity. While it is true that many manufacturer’s products fit inside another’s cavity, the cross drills sometimes expose an o-ring to pressure, causing the o-ring to be extruded.

**Valve / Cavity Compatibility Chart:** Through acquisition, Parker Hannifin has accumulated a number of manufacturers with “common” cavities. To accommodate all of our product lines, you will find a chart like the one shown on this page on each catalog page. The purpose of this chart is to help identify if a valve from one acquisition can be replaced by a Parker valve, or another acquisition valve. The valves are designated by the columns of the chart and the cavities by the rows. If you have an existing cavity, you find it on the chart and follow across to see which valves you may put in the cavity. For instance, using the chart below, let’s say you have an existing manifold in which you had manufactured a FPS cavity (maybe you were using a SV2A-10). By finding the row labeled FPS and following across, you find that you could use the FPS product, or a CEC product of the same size in this cavity. A Parker or Waterman valve will not fit in this cavity without modifying the cavity.

		VALVE			
		Parker	Waterman	FPS	CEC
CAVITY	Parker	X	X		
	Waterman	X	X		
	FPS				
	CEC				

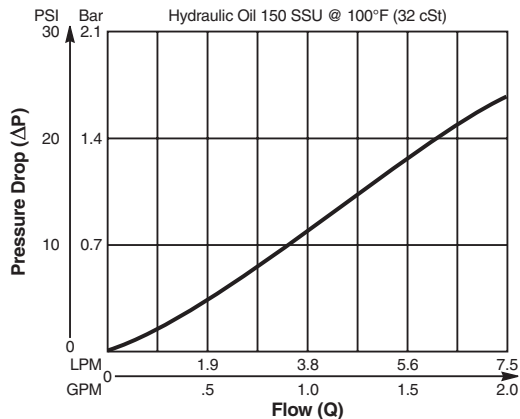
- CV  
Check Valves
- SH  
Shuttle Valves
- LM  
Load/Motor Controls
- FC  
Flow Controls
- PC  
Pressure Controls
- LE  
Logic Elements
- DC  
Directional Controls
- SV  
Solenoid Valves
- PV  
Proportional Valves
- CE  
Coils & Electronics
- BC  
Bodies & Cavities
- TD  
Technical Data

**Valve/Cavity Compatibility**

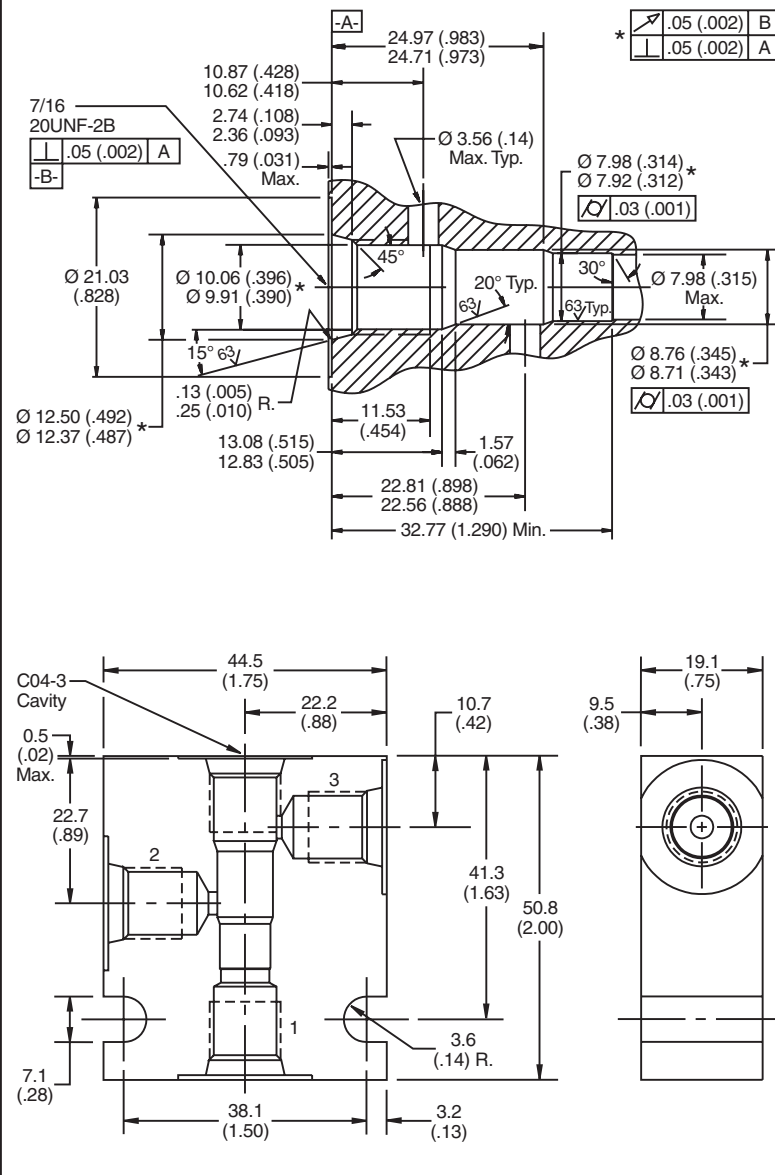
For additional information see Technical Tips on pages BC2-BC3.

		VALVE			
		Parker	Waterman	FPS	CEC
CAVITY	Parker	X	X		
	Waterman	X	X		
	FPS				
	CEC				

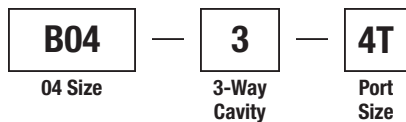
**Performance Curve**  
**Pressure Drop vs. Flow**



**Dimensions** Millimeters (Inches)



**Ordering Information**



Code	Port Size / Material
4T	SAE-4 Steel

Weight: .10 kg (.23 lbs.)

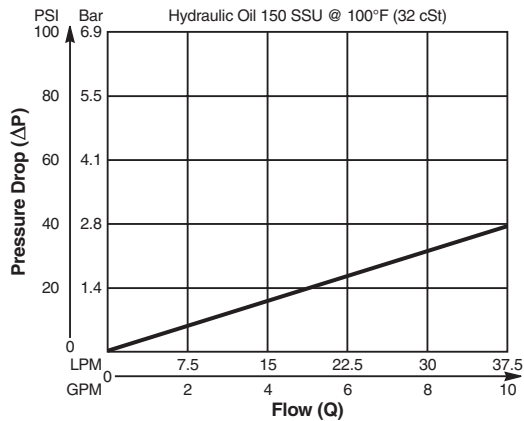
CV
Check Valves
SH
Shuttle Valves
LM
Load/Motor Controls
FC
Flow Controls
PC
Pressure Controls
LE
Logic Elements
DC
Directional Controls
SV
Solenoid Valves
PV
Proportional Valves
CE
Coils & Electronics
BC
Bodies & Cavities
TD
Technical Data

**Valve/Cavity Compatibility**

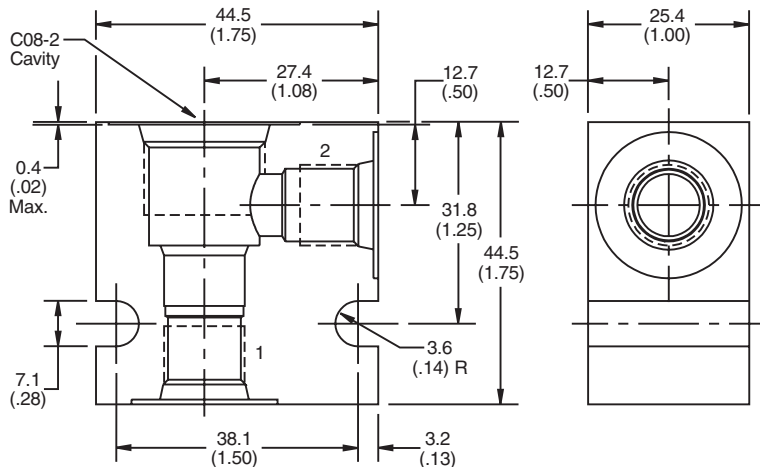
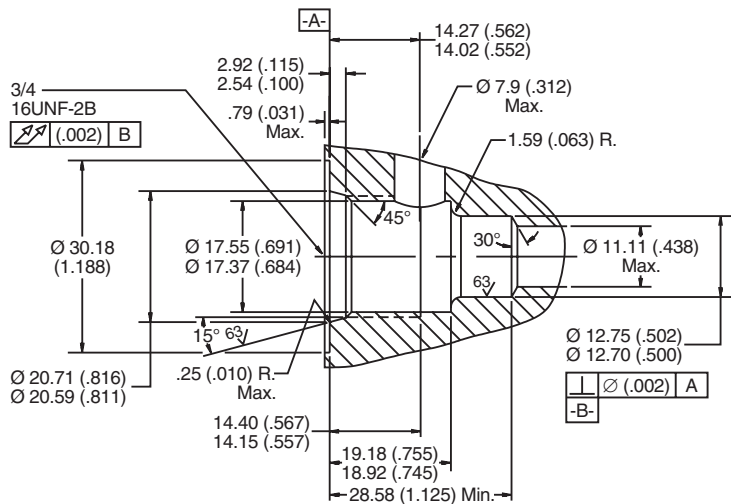
For additional information see Technical Tips on pages BC2-BC3.

		VALVE			
		Parker	Waterman	FPS	CEC
CAVITY	Parker	X	X	X	X
	Waterman	X	X	X	X
	FPS	X	X	X	X
	CEC	X	X	X	X

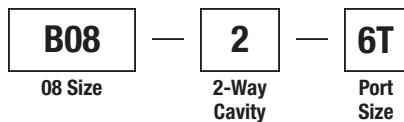
**Performance Curve**  
**Pressure Drop vs. Flow**



**Dimensions** Millimeters (Inches)



**Ordering Information**



Code	Port Size
6T	SAE - 6/Steel (5000PSI)

Weight: .11 kg (.25 lbs.)

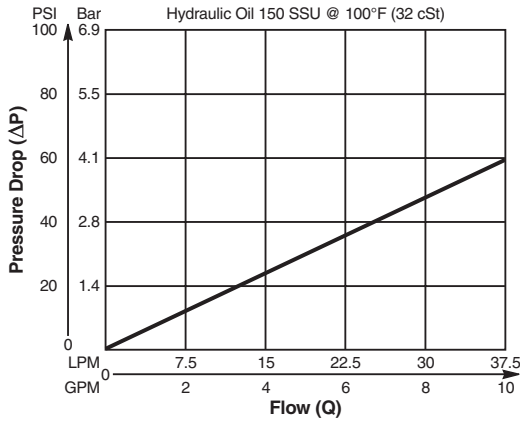
- CV  
Check Valves
- SH  
Shuttle Valves
- LM  
Load/Motor Controls
- FC  
Flow Controls
- PC  
Pressure Controls
- LE  
Logic Elements
- DC  
Directional Controls
- SV  
Solenoid Valves
- PV  
Proportional Valves
- CE  
Coils & Electronics
- BC  
Bodies & Cavities
- TD  
Technical Data

**Valve/Cavity Compatibility**

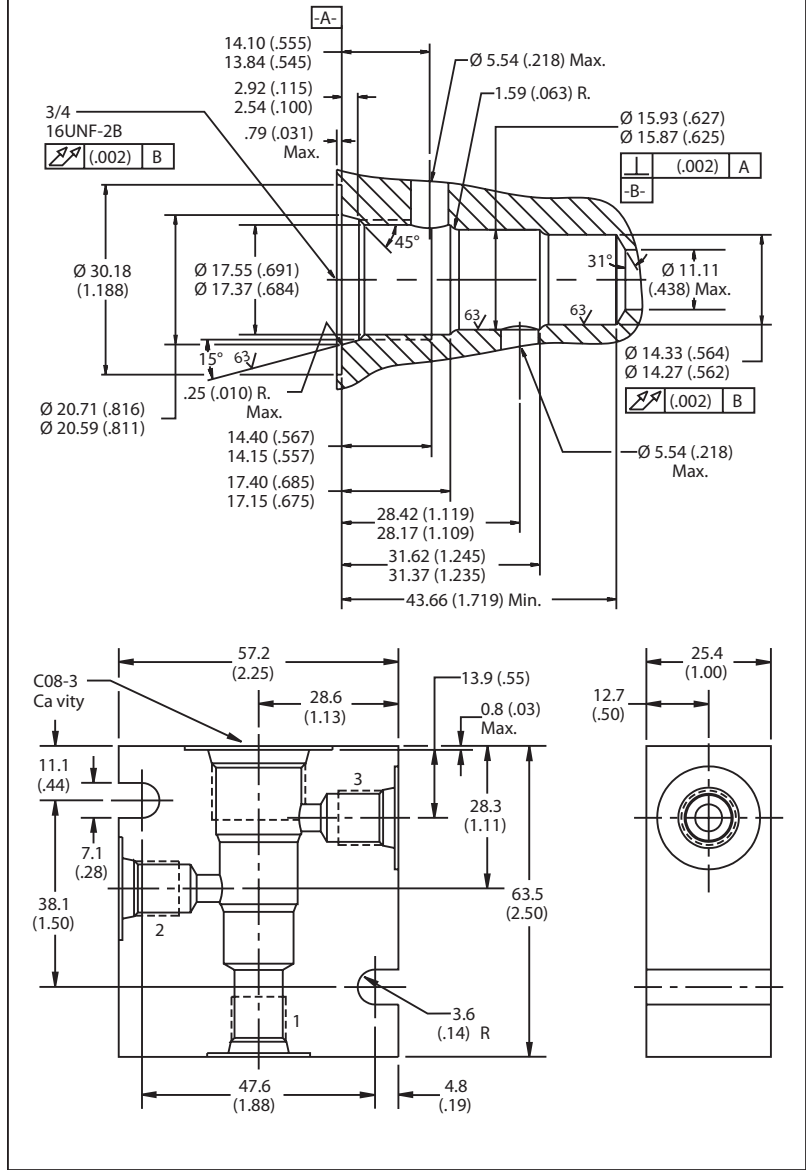
For additional information see Technical Tips on pages BC2-BC3.

		VALVE			
		Parker	Waterman	FPS	CEC
CAVITY	Parker	X	X		
	Waterman	X	X		
	FPS			X	X
	CEC			X	X

**Performance Curve**  
**Pressure Drop vs. Flow**

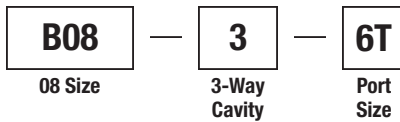


**Dimensions** Millimeters (Inches)



- CV**  
Check Valves
- SH**  
Shuttle Valves
- LM**  
Load/Motor Controls
- FC**  
Flow Controls
- PC**  
Pressure Controls
- LE**  
Logic Elements
- DC**  
Directional Controls
- SV**  
Solenoid Valves
- PV**  
Proportional Valves
- CE**  
Coils & Electronics
- BC**  
Bodies & Cavities
- TD**  
Technical Data

**Ordering Information**



Code	Port Size
6T	SAE - 6/Steel (5000PSI)

**Weight:** .27 kg (.60 lbs.)

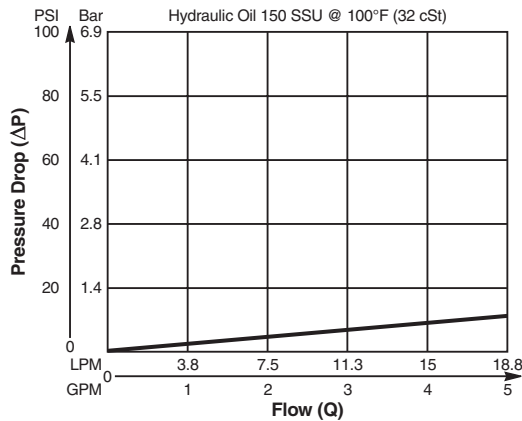


**Valve/Cavity Compatibility**

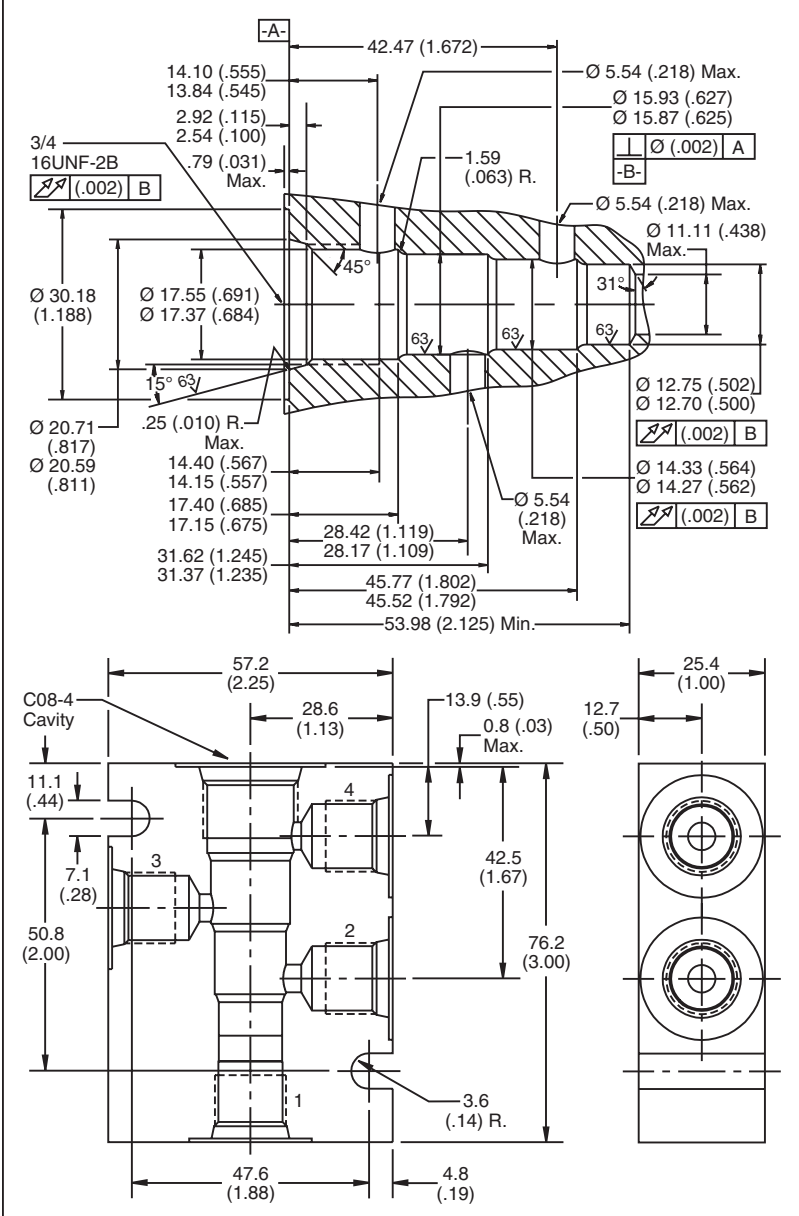
For additional information see Technical Tips on pages BC2-BC3.

		VALVE			
		Parker	Waterman	FPS	CEC
CAVITY	Parker	X	X		
	Waterman	X	X		
	FPS			X	
	CEC				

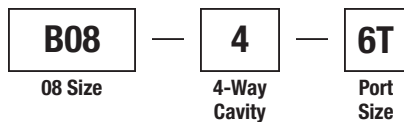
**Performance Curve**  
**Pressure Drop vs. Flow**



**Dimensions** Millimeters (Inches)



**Ordering Information**



Code	Port Size
6T	SAE - 6/Steel (5000PSI)

Weight: .45 kg (1.0 lbs.)

- CV Check Valves
- SH Shuttle Valves
- LM Load/Motor Controls
- FC Flow Controls
- PC Pressure Controls
- LE Logic Elements
- DC Directional Controls
- SV Solenoid Valves
- PV Proportional Valves
- CE Coils & Electronics
- BC Bodies & Cavities
- TD Technical Data



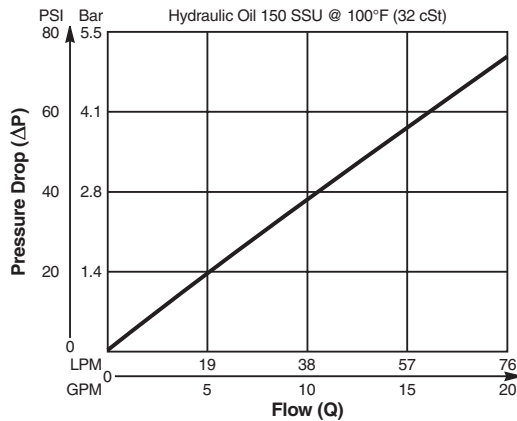


**Valve/Cavity Compatibility**

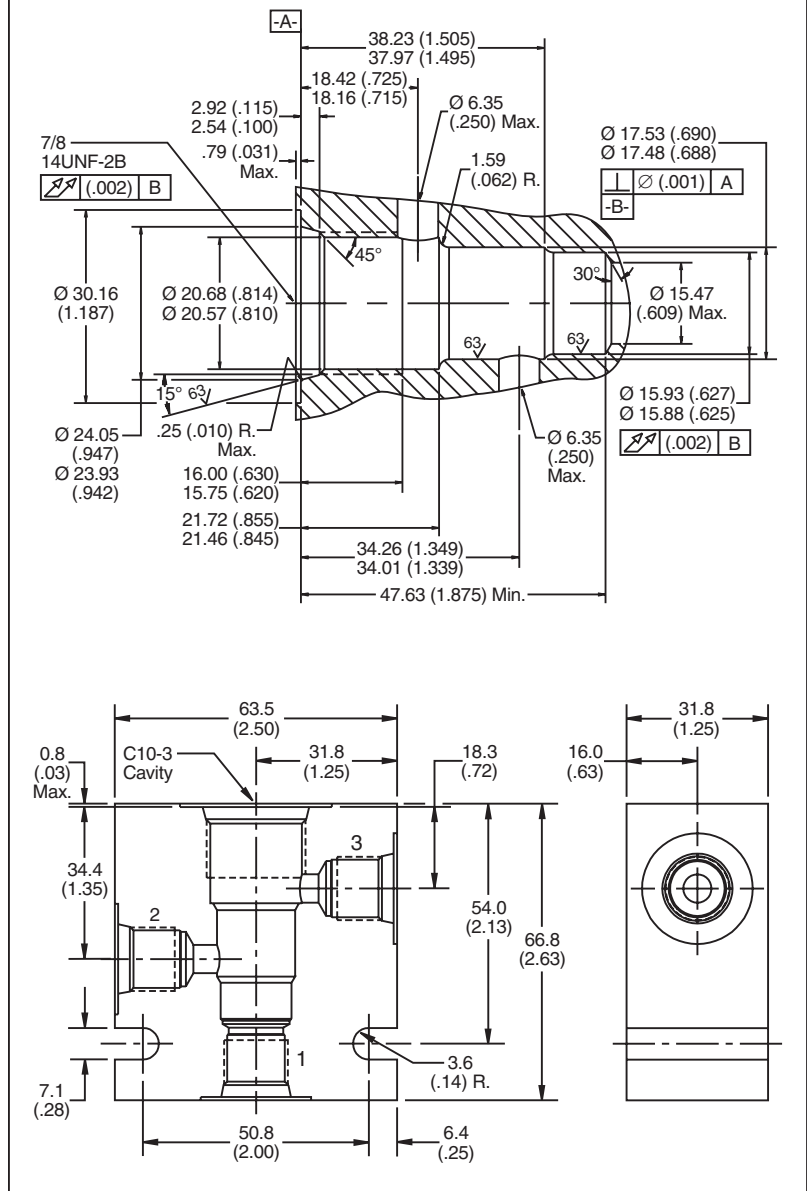
For additional information see Technical Tips on pages BC2-BC3.

		VALVE			
		Parker	Waterman	FPS	CEC
CAVITY	Parker	X	X	X	X
	Waterman	X	X	X	X
	FPS	X	X	X	X
	CEC	X	X	X	X

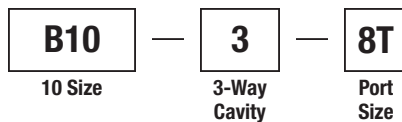
**Performance Curve**  
**Pressure Drop vs. Flow**



**Dimensions** Millimeters (Inches)



**Ordering Information**



Code	Port Size
8T	SAE - 8/Steel (5000PSI)

**Weight:** .77 kg (1.7 lbs.)

- CV  
Check Valves
- SH  
Shuttle Valves
- LM  
Load/Motor Controls
- FC  
Flow Controls
- PC  
Pressure Controls
- LE  
Logic Elements
- DC  
Directional Controls
- SV  
Solenoid Valves
- PV  
Proportional Valves
- CE  
Coils & Electronics
- BC  
Bodies & Cavities
- TD  
Technical Data

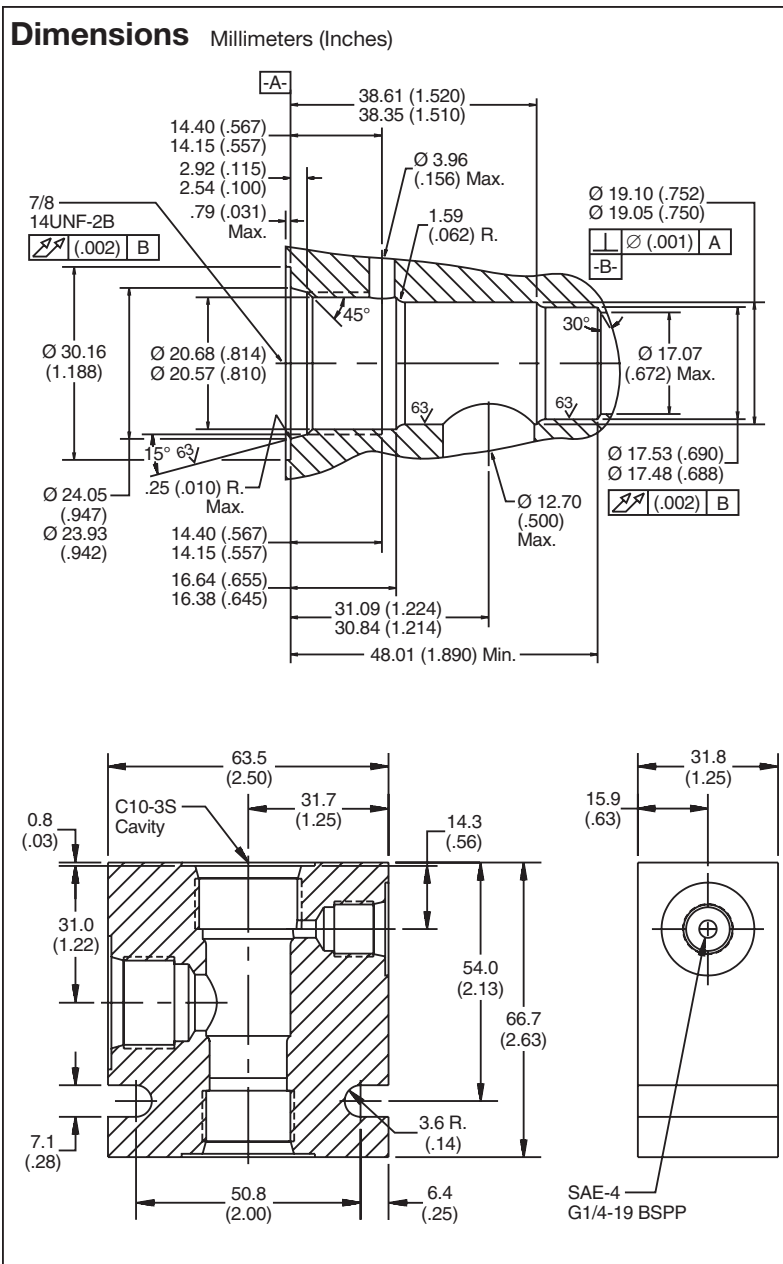
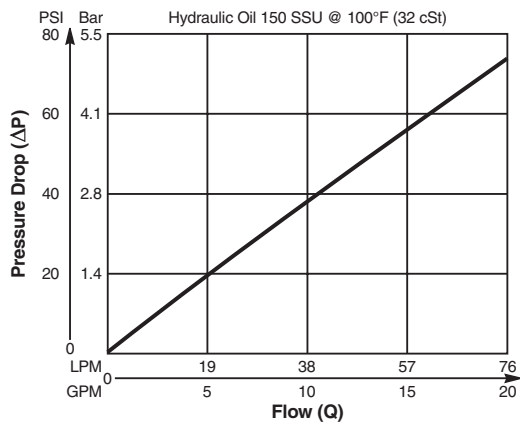


**Valve/Cavity Compatibility**

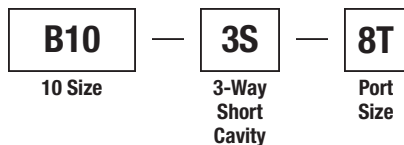
For additional information see Technical Tips on pages BC2-BC3.

		VALVE			
		Parker	Waterman	FPS	CEC
CAVITY	Parker				
	Waterman				
	FPS			X	X
	CEC			X	X

**Performance Curve**  
**Pressure Drop vs. Flow**



**Ordering Information**



Code	Port Size
8T	SAE - 8/Steel (5000PSI)

Weight: .77 kg (1.7 lbs.)

**\*Please be advised that this is a non-core line body.**  
**Additional lead-time and/or pricing requirements may exist when ordering.**

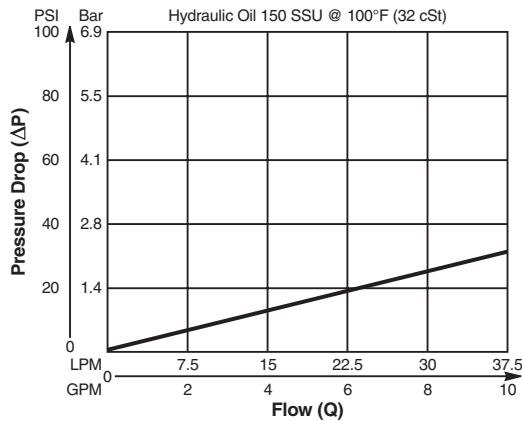
- CV Check Valves
- SH Shuttle Valves
- LM Load/Motor Controls
- FC Flow Controls
- PC Pressure Controls
- LE Logic Elements
- DC Directional Controls
- SV Solenoid Valves
- PV Proportional Valves
- CE Coils & Electronics
- BC Bodies & Cavities
- TD Technical Data

**Valve/Cavity Compatibility**

For additional information see Technical Tips on pages BC2-BC3.

		VALVE			
		Parker	Waterman	FPS	CEC
CAVITY	Parker	X	X	X	X
	Waterman	X	X	X	X
	FPS	X	X	X	X
	CEC	X	X	X	X

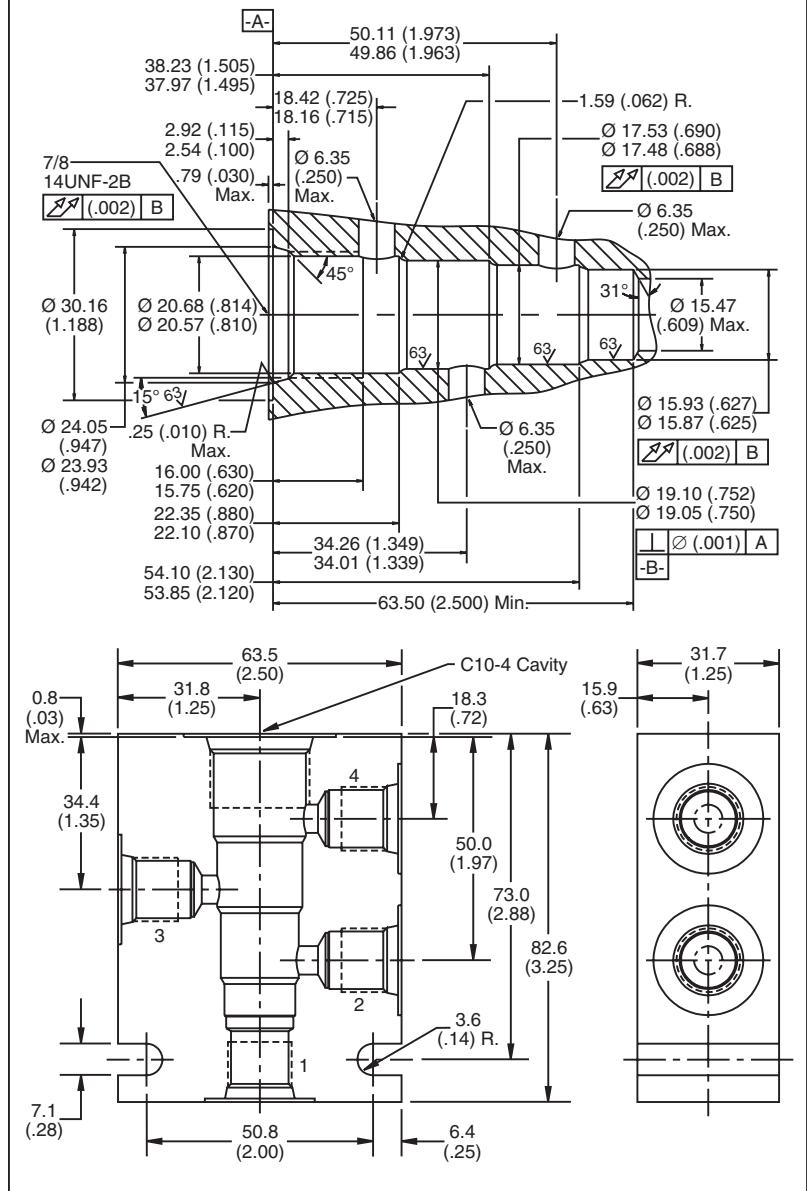
**Performance Curve**  
**Pressure Drop vs. Flow**



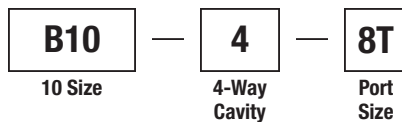
**NOTE:**

When machining for use with DF102P, Ports 1 and 4 must be connected in the manifold/block.

**Dimensions** Millimeters (Inches)



**Ordering Information**



Code	Port Size
8T	SAE - 8/Steel (5000PSI)

Weight: .90 kg (2.0 lbs.)

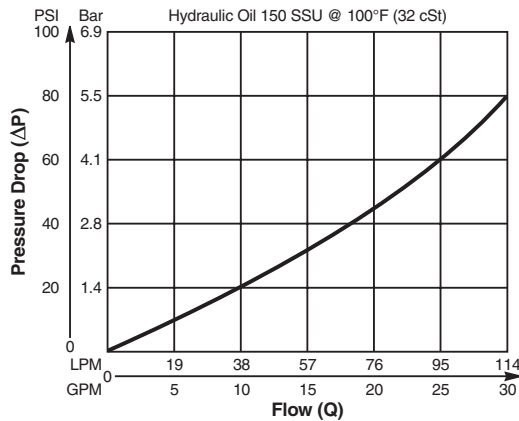
- CV Check Valves
- SH Shuttle Valves
- LM Load/Motor Controls
- FC Flow Controls
- PC Pressure Controls
- LE Logic Elements
- DC Directional Controls
- SV Solenoid Valves
- PV Proportional Valves
- CE Coils & Electronics
- BC Bodies & Cavities
- TD Technical Data

**Valve/Cavity Compatibility**

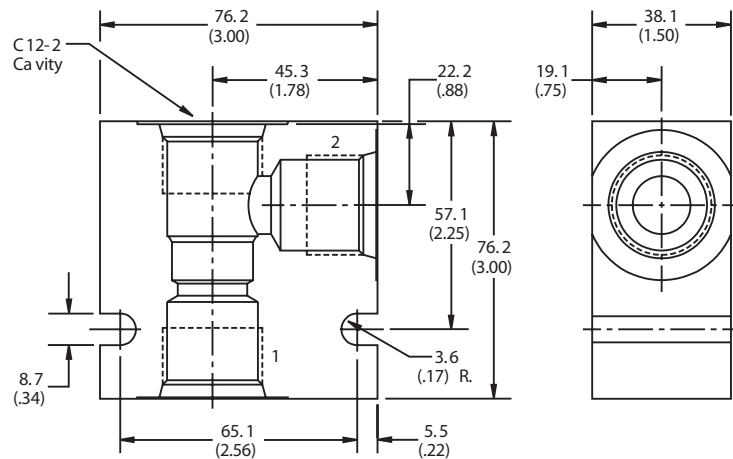
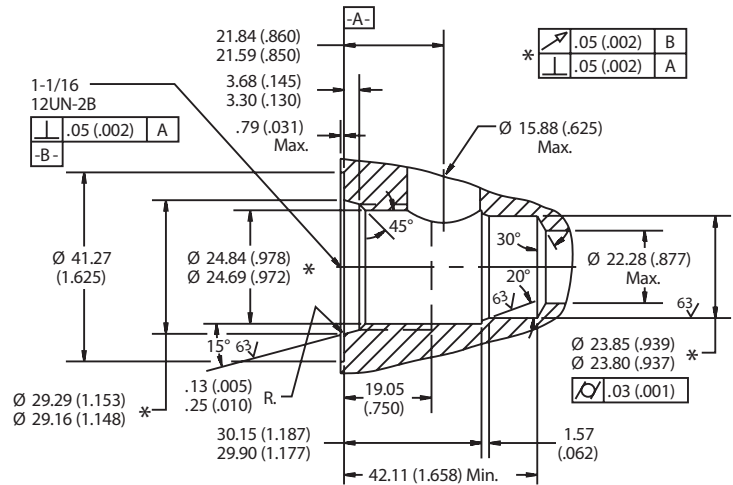
For additional information see Technical Tips on pages BC2-BC3.

		VALVE			
		Parker	Waterman	FPS	CEC
CAVITY	Parker	X	X		
	Waterman	X	X		
	FPS				
	CEC				X

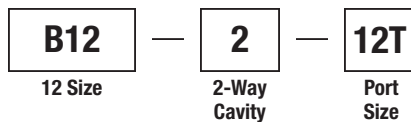
**Performance Curve**  
**Pressure Drop vs. Flow**



**Dimensions** Millimeters (Inches)



**Ordering Information**



Code	Port Size
12T	SAE - 12/Steel (5000PSI)

Weight: .45 kg (1.0 lbs.)

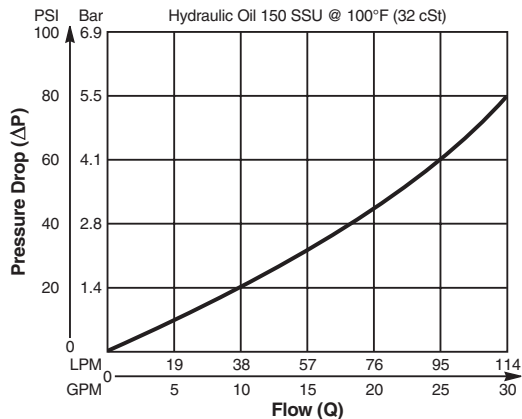
CV
Check Valves
SH
Shuttle Valves
LM
Load/Motor Controls
FC
Flow Controls
PC
Pressure Controls
LE
Logic Elements
DC
Directional Controls
SV
Solenoid Valves
PV
Proportional Valves
CE
Coils & Electronics
BC
Bodies & Cavities
TD
Technical Data

**Valve/Cavity Compatibility**

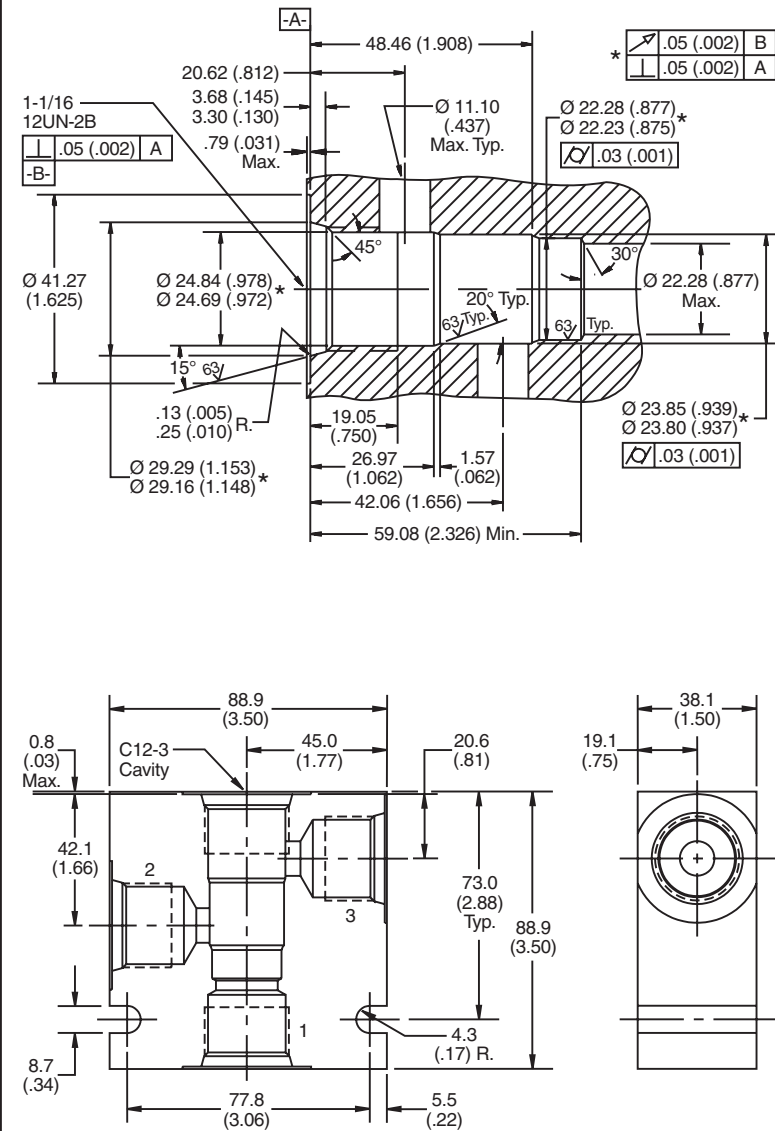
For additional information see Technical Tips on pages BC2-BC3.

		VALVE			
		Parker	Waterman	FPS	CEC
CAVITY	Parker	X	X		
	Waterman	X	X		
	FPS				
	CEC				X

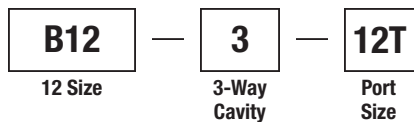
**Performance Curve**  
**Pressure Drop vs. Flow**



**Dimensions** Millimeters (Inches)



**Ordering Information**



Code	Port Size
12T	SAE - 12/Steel (5000PSI)

Weight: 2.0 kg (4.5 lbs.)

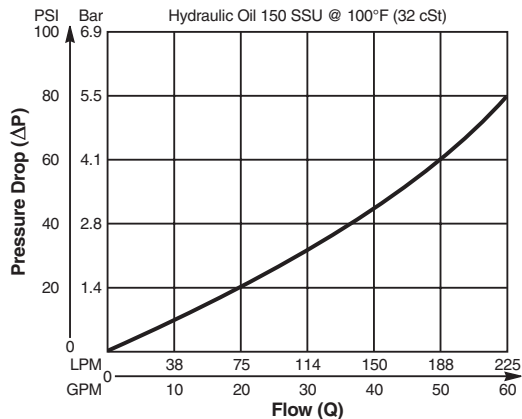
CV
Check Valves
SH
Shuttle Valves
LM
Load/Motor Controls
FC
Flow Controls
PC
Pressure Controls
LE
Logic Elements
DC
Directional Controls
SV
Solenoid Valves
PV
Proportional Valves
CE
Coils & Electronics
BC
Bodies & Cavities
TD
Technical Data

**Valve/Cavity Compatibility**

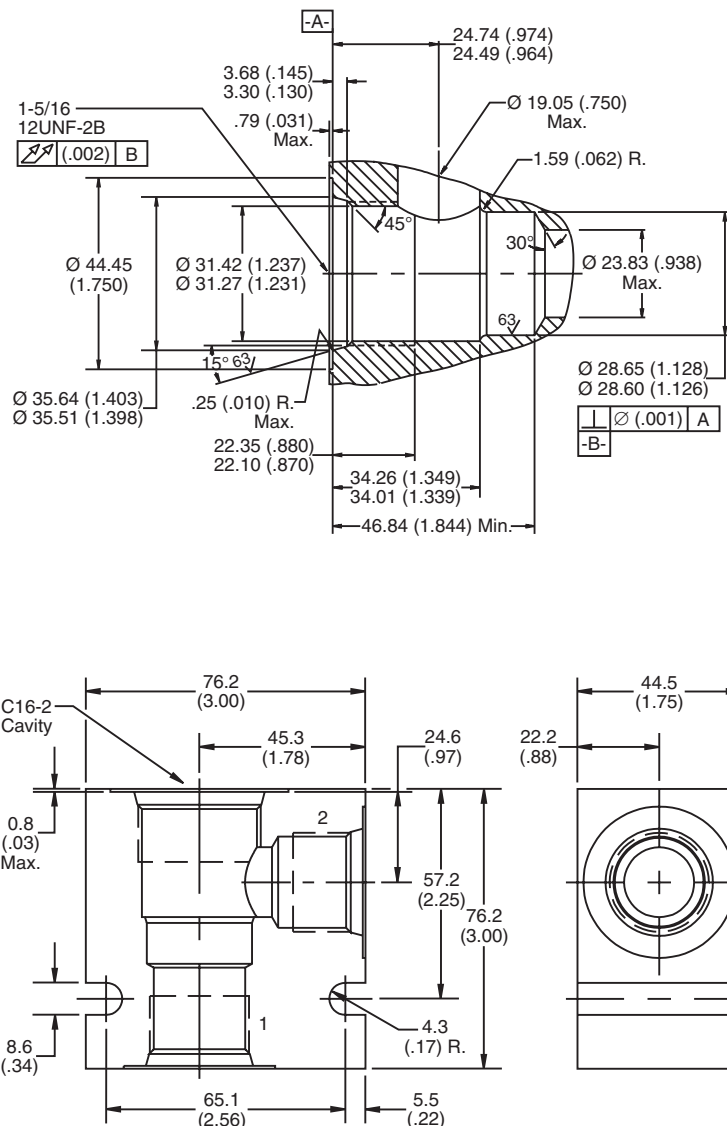
For additional information see Technical Tips on pages BC2-BC3.

		VALVE			
		Parker	Waterman	FPS	CEC
CAVITY	Parker	X	X		
	Waterman	X	X		
	FPS			X	X
	CEC			X	X

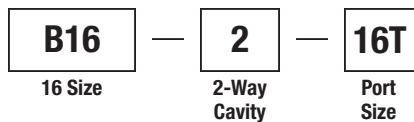
**Performance Curve**  
**Pressure Drop vs. Flow**



**Dimensions** Millimeters (Inches)



**Ordering Information**



Code	Port Size
16T	SAE - 16/Steel (5000PSI)

Weight: 1.5 kg (3.4 lbs.)

- CV**  
Check Valves
- SH**  
Shuttle Valves
- LM**  
Load/Motor Controls
- FC**  
Flow Controls
- PC**  
Pressure Controls
- LE**  
Logic Elements
- DC**  
Directional Controls
- SV**  
Solenoid Valves
- PV**  
Proportional Valves
- CE**  
Coils & Electronics
- BC**  
Bodies & Cavities
- TD**  
Technical Data

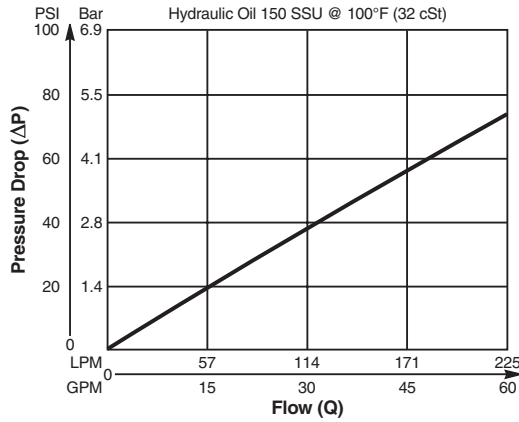


**Valve/Cavity Compatibility**

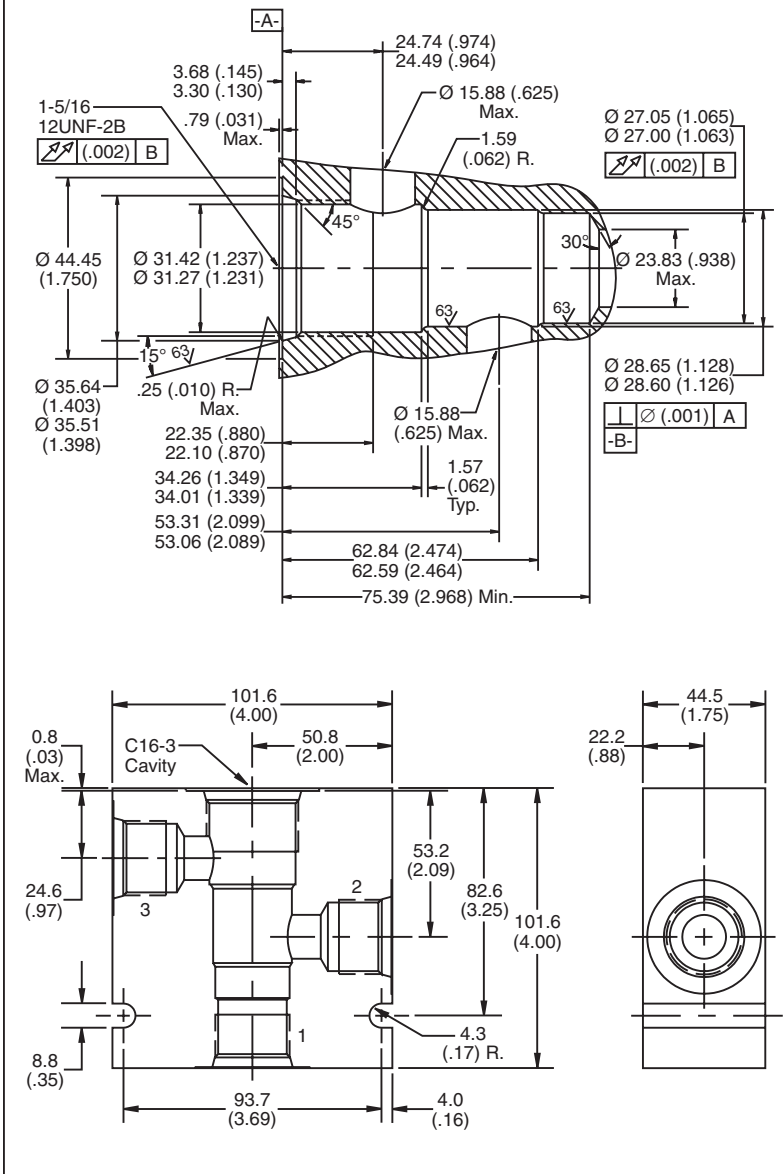
For additional information see Technical Tips on pages BC2-BC3.

		VALVE			
		Parker	Waterman	FPS	CEC
CAVITY	Parker	X	X		
	Waterman	X	X		
	FPS			X	X
	CEC			X	X

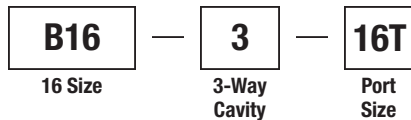
**Performance Curve**  
**Pressure Drop vs. Flow**



**Dimensions** Millimeters (Inches)



**Ordering Information**



Code	Port Size
16T	SAE - 16/Steel (5000PSI)

Weight: 3.0 kg (6.5 lbs.)

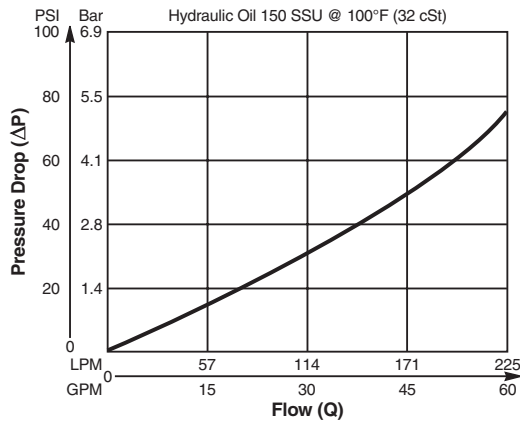
- CV Check Valves
- SH Shuttle Valves
- LM Load/Motor Controls
- FC Flow Controls
- PC Pressure Controls
- LE Logic Elements
- DC Directional Controls
- SV Solenoid Valves
- PV Proportional Valves
- CE Coils & Electronics
- BC Bodies & Cavities
- TD Technical Data

**Valve/Cavity Compatibility**

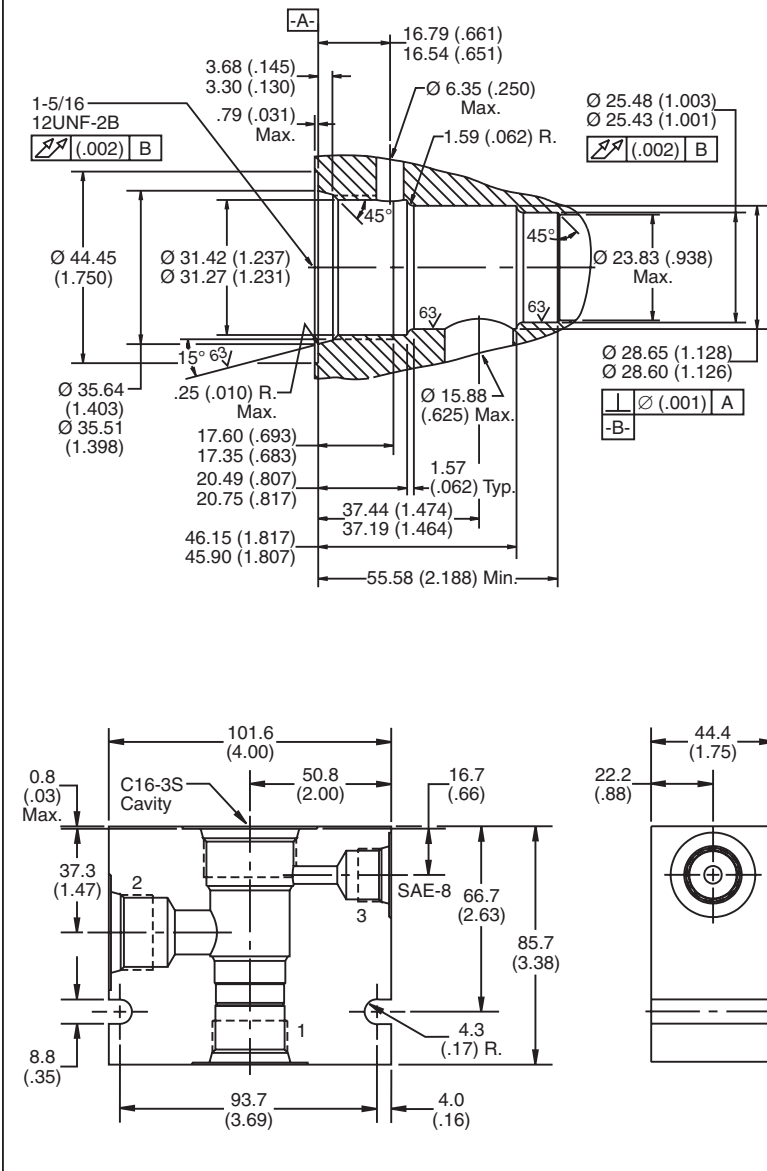
For additional information see Technical Tips on pages BC2-BC3.

		VALVE			
		Parker	Waterman	FPS	CEC
CAVITY	Parker	X	X	X	X
	Waterman	X	X	X	X
	FPS	X	X	X	X
	CEC	X	X	X	X

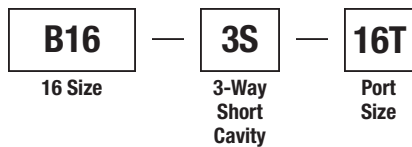
**Performance Curve**  
**Pressure Drop vs. Flow**



**Dimensions** Millimeters (Inches)



**Ordering Information**



Code	Port Size
16T	SAE - 16/Steel (5000PSI)

Weight: 2.4 kg (5.4 lbs.)

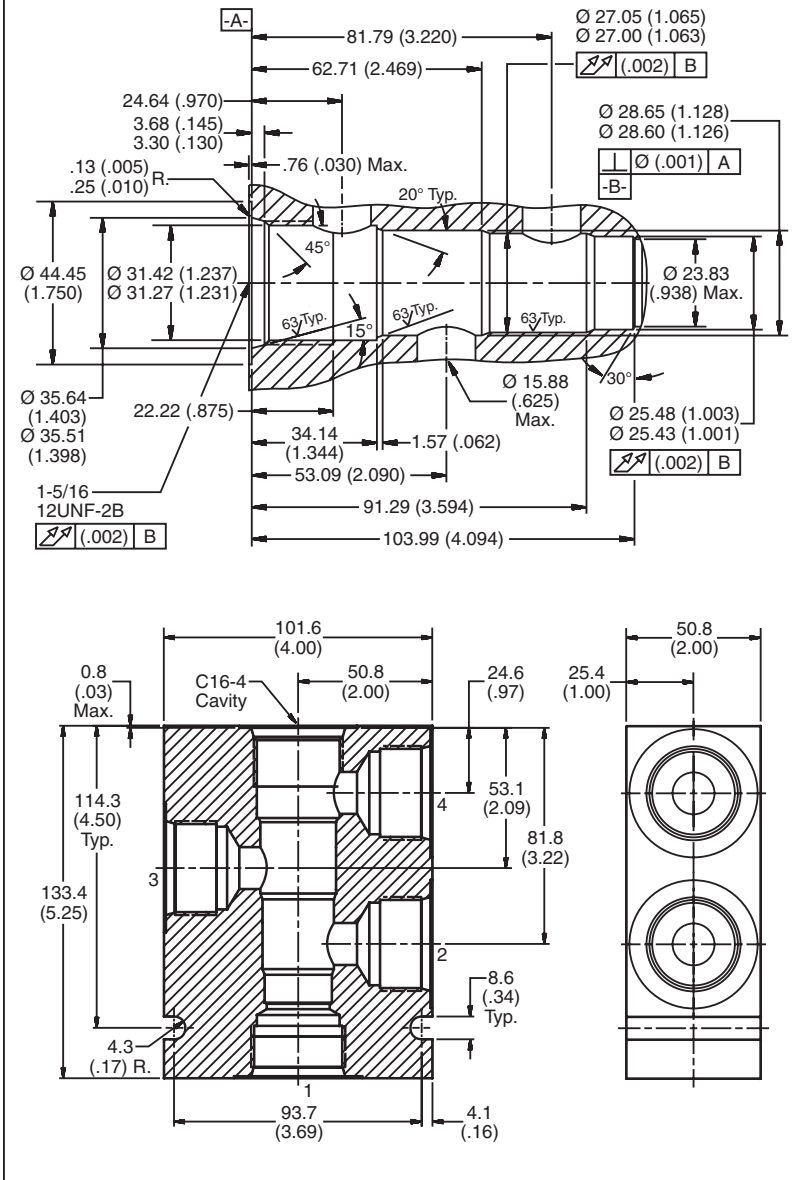
CV
Check Valves
SH
Shuttle Valves
LM
Load/Motor Controls
FC
Flow Controls
PC
Pressure Controls
LE
Logic Elements
DC
Directional Controls
SV
Solenoid Valves
PV
Proportional Valves
CE
Coils & Electronics
BC
Bodies & Cavities
TD
Technical Data

**Valve/Cavity Compatibility**

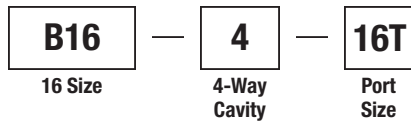
For additional information see Technical Tips on pages BC2-BC3.

		VALVE			
		Parker	Waterman	FPS	CEC
CAVITY	Parker	X	X		
	Waterman	X	X		
	FPS			X	X
	CEC			X	X

**Dimensions** Millimeters (Inches)



**Ordering Information**



Code	Port Size
16T	SAE - 16/Steel (5000PSI)

**Weight:** 3.75 kg (8.125 lbs.)

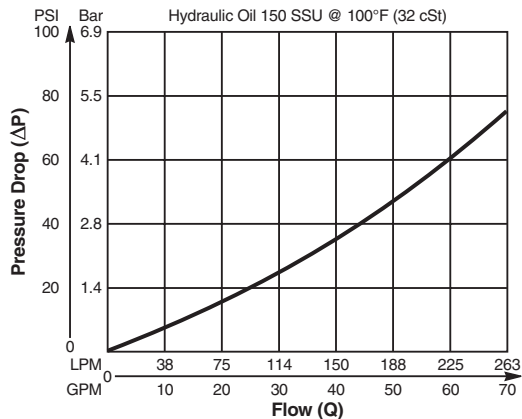
- CV**  
Check Valves
- SH**  
Shuttle Valves
- LM**  
Load/Motor Controls
- FC**  
Flow Controls
- PC**  
Pressure Controls
- LE**  
Logic Elements
- DC**  
Directional Controls
- SV**  
Solenoid Valves
- PV**  
Proportional Valves
- CE**  
Coils & Electronics
- BC**  
Bodies & Cavities
- TD**  
Technical Data

**Valve/Cavity Compatibility**

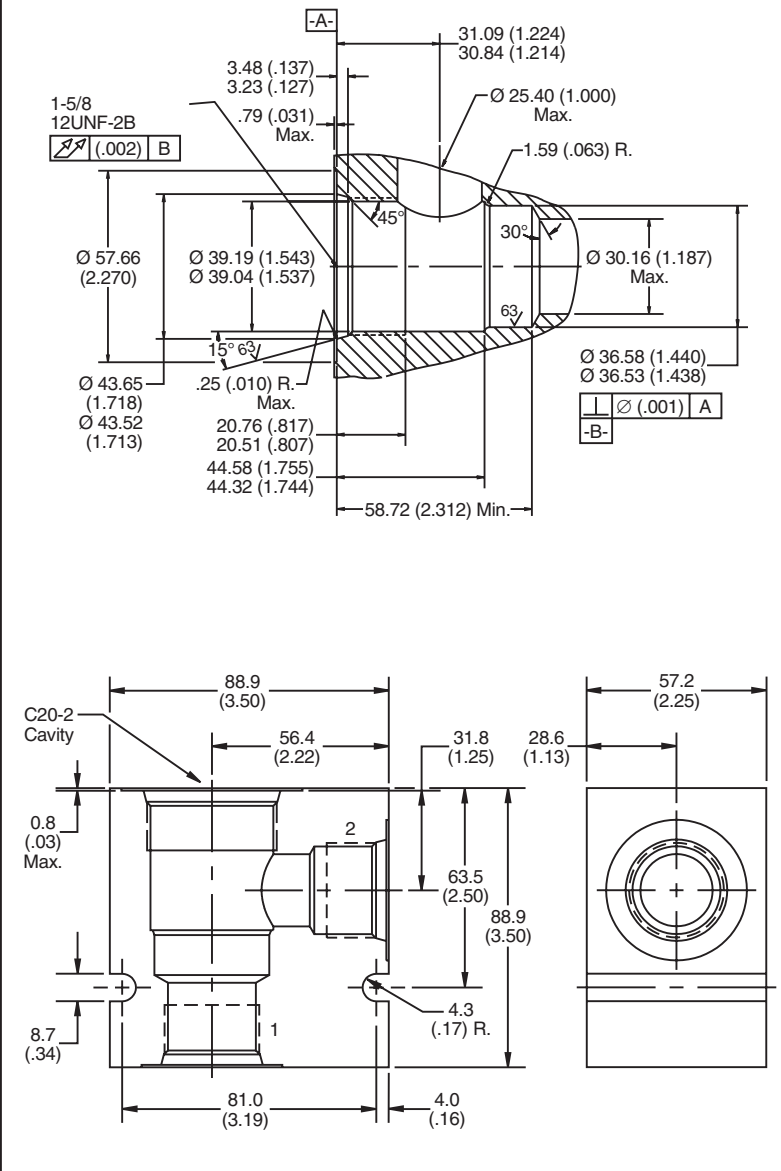
For additional information see Technical Tips on pages BC2-BC3.

		VALVE			
		Parker	Waterman	FPS	CEC
CAVITY	Parker	X	X	X	X
	Waterman	X	X	X	X
	FPS	X	X	X	X
	CEC	X	X	X	X

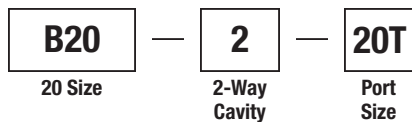
**Performance Curve**  
**Pressure Drop vs. Flow**



**Dimensions** Millimeters (Inches)



**Ordering Information**



Code	Port Size
20T	SAE - 20/Steel (5000PSI)

Weight: 6.3 kg (14 lbs.)

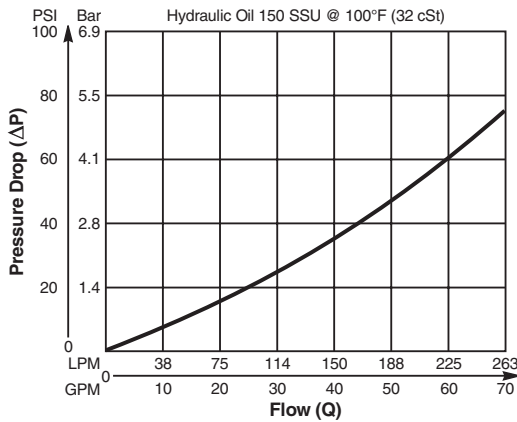
- CV**  
Check Valves
- SH**  
Shuttle Valves
- LM**  
Load/Motor Controls
- FC**  
Flow Controls
- PC**  
Pressure Controls
- LE**  
Logic Elements
- DC**  
Directional Controls
- SV**  
Solenoid Valves
- PV**  
Proportional Valves
- CE**  
Coils & Electronics
- BC**  
Bodies & Cavities
- TD**  
Technical Data

**Valve/Cavity Compatibility**

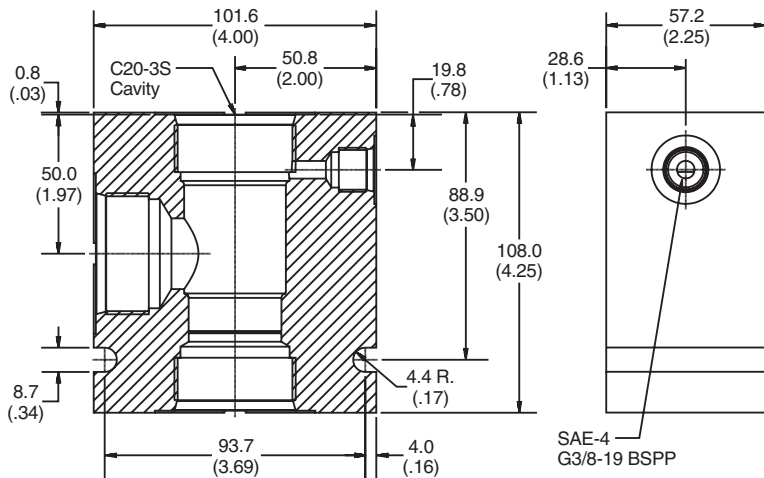
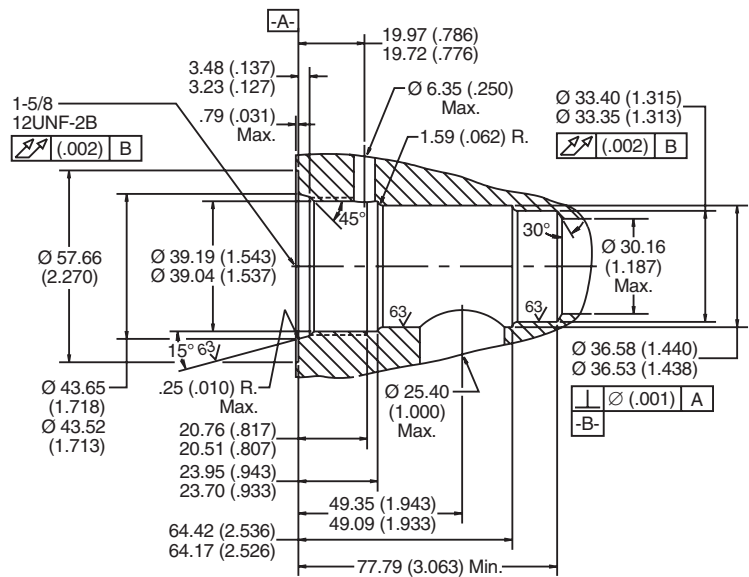
For additional information see Technical Tips on pages BC2-BC3.

		VALVE			
		Parker	Waterman	FPS	CEC
CAVITY	Parker				
	Waterman				
	FPS				
	CEC				X

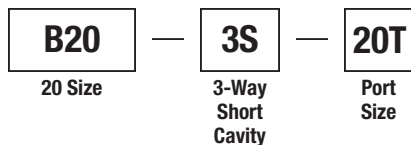
**Performance Curve**  
**Pressure Drop vs. Flow**



**Dimensions** Millimeters (Inches)



**Ordering Information**



Code	Port Size
20T	SAE - 20/Steel (5000PSI)

Weight: 10.8 kg (22.2 lbs.)

**\*Please be advised that this is a non-core line body.**  
 Additional lead-time and/or pricing requirements may exist when ordering.

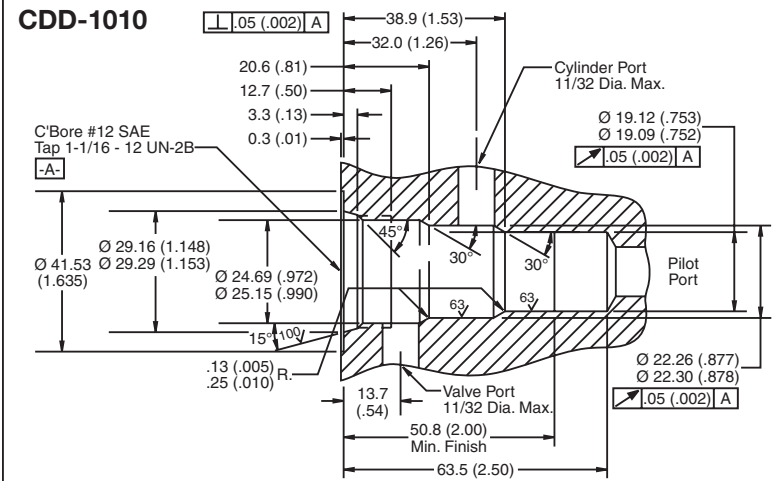
CV
Check Valves
SH
Shuttle Valves
LM
Load/Motor Controls
FC
Flow Controls
PC
Pressure Controls
LE
Logic Elements
DC
Directional Controls
SV
Solenoid Valves
PV
Proportional Valves
CE
Coils & Electronics
BC
Bodies & Cavities
TD
Technical Data

**Valve/Cavity Compatibility**

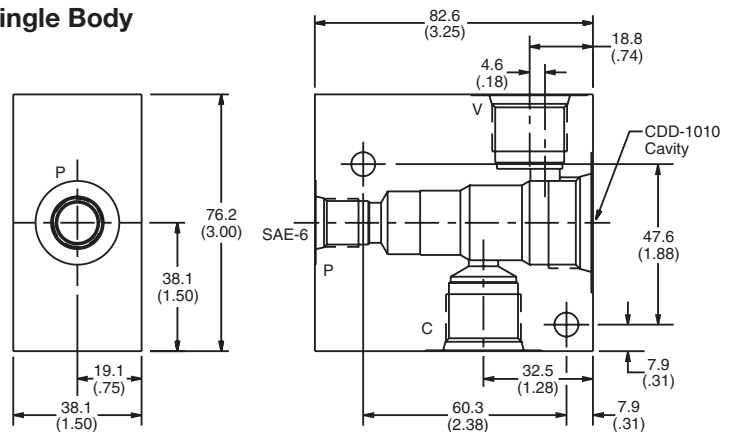
For additional information see Technical Tips on pages BC2-BC3.

		VALVE	
		MHC-010	2-N-4*-10
CAVITY	MHC-010	X	X
	2-N-4*-10	X	X

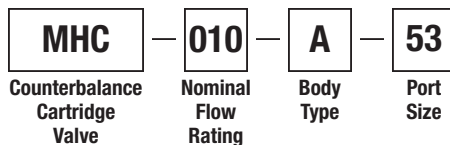
**Dimensions** Millimeters (Inches)



**Single Body**



**Ordering Information**



Code	Body Type
A	Single

Code	Port Size
53	SAE-10 through port

Weight: Single 1.1 kg (2.25 lbs.)

**\*Please be advised that this is a non-core line body. Additional lead-time and/or pricing requirements may exist when ordering.**

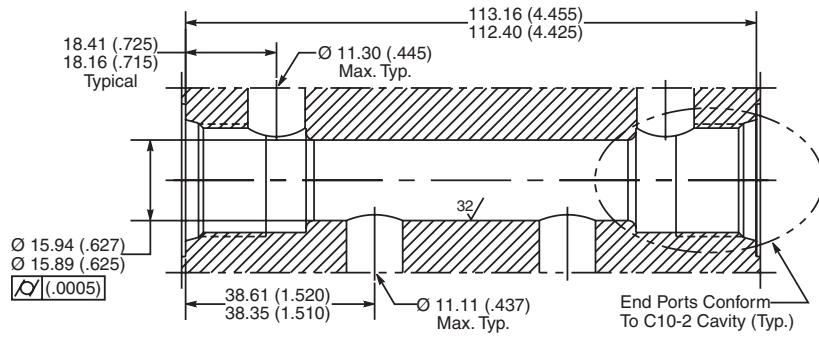
<b>CV</b>
Check Valves
<b>SH</b>
Shuttle Valves
<b>LM</b>
Load/Motor Controls
<b>FC</b>
Flow Controls
<b>PC</b>
Pressure Controls
<b>LE</b>
Logic Elements
<b>DC</b>
Directional Controls
<b>SV</b>
Solenoid Valves
<b>PV</b>
Proportional Valves
<b>CE</b>
Coils & Electronics
<b>BC</b>
Bodies & Cavities
<b>TD</b>
Technical Data

**Dimensions** Millimeters (Inches)

**10 Size Cavity for Dual  
 Check and Pilot Piston**

*For Check Valves Use 2  
 CVH103P\*\**

*For Pilot Piston Use  
 717917 No Seal*



<b>CV</b>
Check Valves
<b>SH</b>
Shuttle Valves
<b>LM</b>
Load/Motor Controls
<b>FC</b>
Flow Controls
<b>PC</b>
Pressure Controls
<b>LE</b>
Logic Elements
<b>DC</b>
Directional Controls
<b>SV</b>
Solenoid Valves
<b>PV</b>
Proportional Valves
<b>CE</b>
Coils & Electronics
<b>BC</b>
Bodies & Cavities
<b>TD</b>
Technical Data

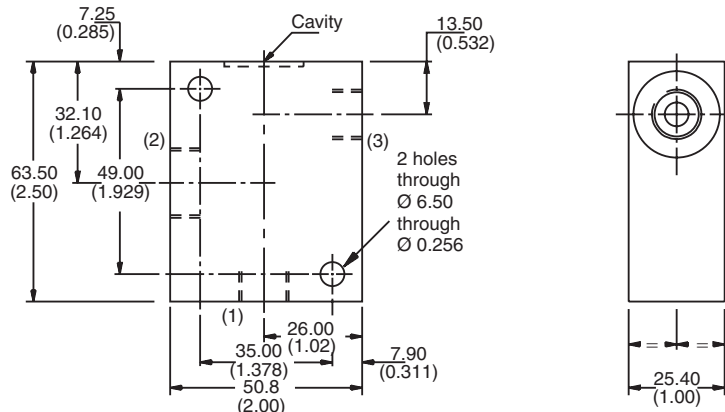
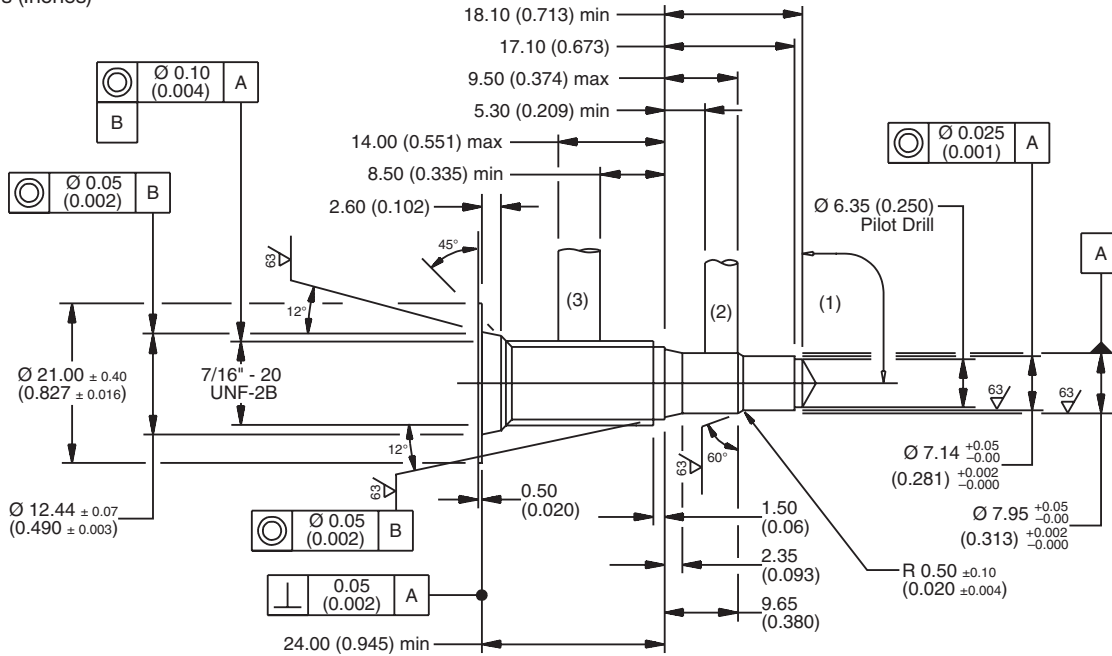




For additional information see Technical Tips on pages BC2-BC3.

**Dimensions**

Millimeters (Inches)



**Ordering Information**

<b>LB10</b>	<b>815</b>	<b>S</b>
Line Body	Port Size	Body Material

Code	Port Size
815	1/4 SAE

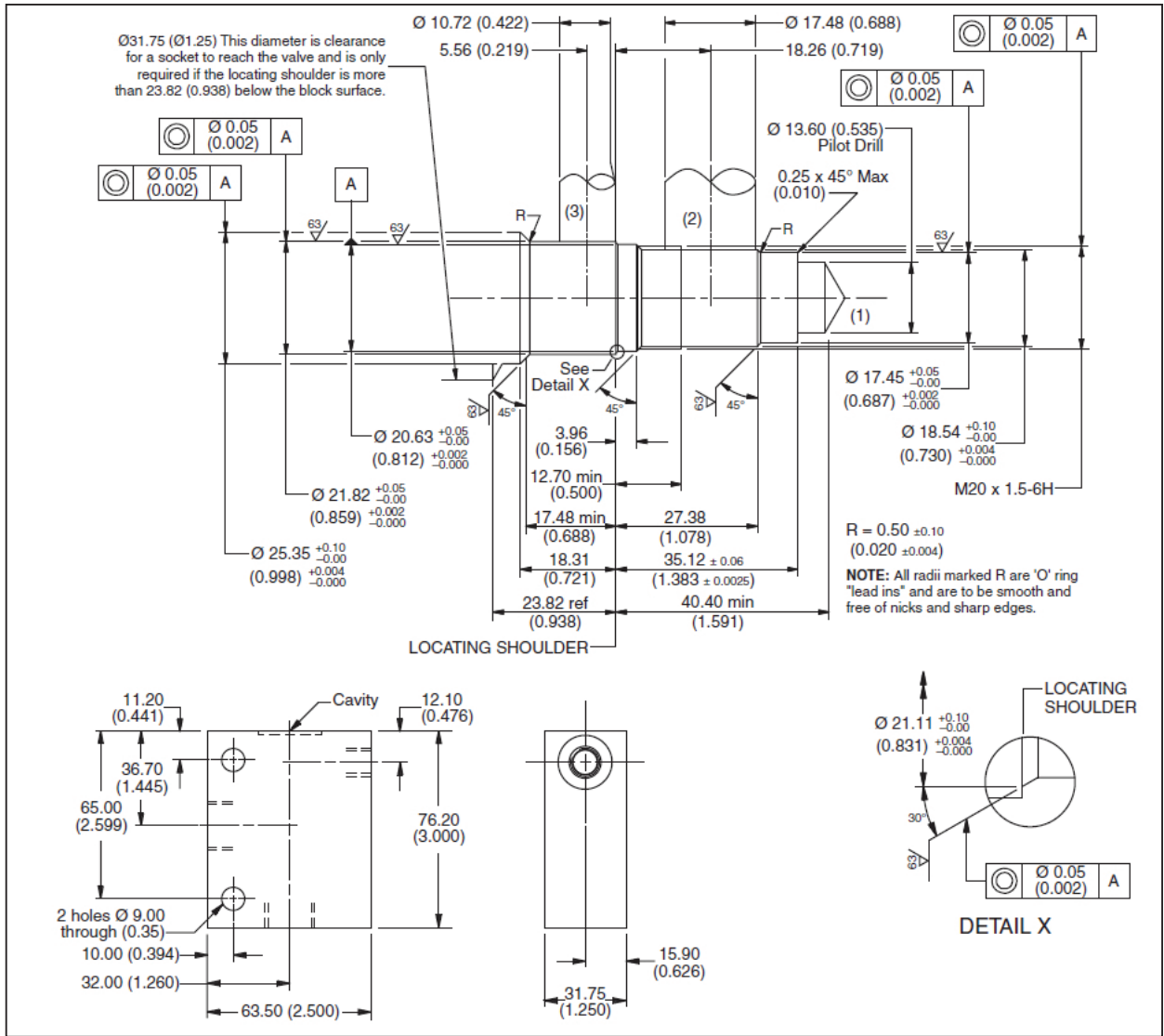
Code	Body Material
S	Steel

**\*Please be advised that this is a non-core line body.**  
**Additional lead-time and/or pricing requirements may exist when ordering.**

- CV
- Check Valves
- SH
- Shuttle Valves
- LM
- Load/Motor Controls
- FC
- Flow Controls
- PC
- Pressure Controls
- LE
- Logic Elements
- DC
- Directional Controls
- SV
- Solenoid Valves
- PV
- Proportional Valves
- CE
- Coils & Electronics
- BC
- Bodies & Cavities
- TD
- Technical Data

For additional information see Technical Tips on pages BC2-BC3.

**Dimensions**  
 Millimeters (Inches)



**Ordering Information**

<b>LB10</b>	<b>825</b>	<b>S</b>
Line Body	Port Size	Body Material

Code	Port Size
825	1/4 SAE

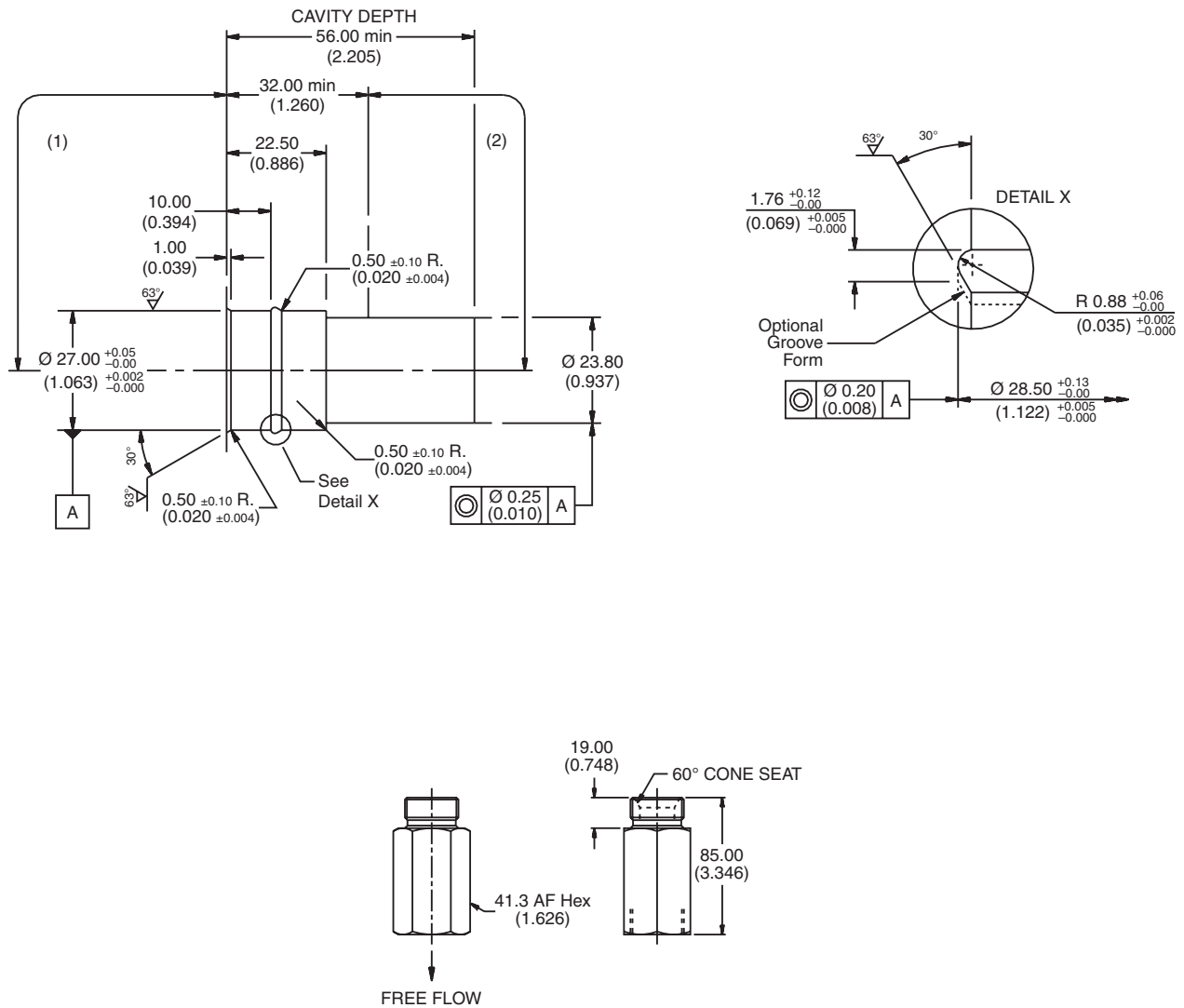
Code	Body Material
S	Steel

\*Please be advised that this is a non-core line body.  
 Additional lead-time and/or pricing requirements may exist when ordering.

CV
Check Valves
SH
Shuttle Valves
LM
Load/Motor Controls
FC
Flow Controls
PC
Pressure Controls
LE
Logic Elements
DC
Directional Controls
SV
Solenoid Valves
PV
Proportional Valves
CE
Coils & Electronics
BC
Bodies & Cavities
TD
Technical Data

For additional information see Technical Tips on pages BC2-BC3.

**Dimensions**  
 Millimeters (Inches)



**Ordering Information**

<b>LB10</b>	<b>212</b>	<b>S</b>
Line Body	Port Size	Body Material

Code	Port Size
212	1 SAE

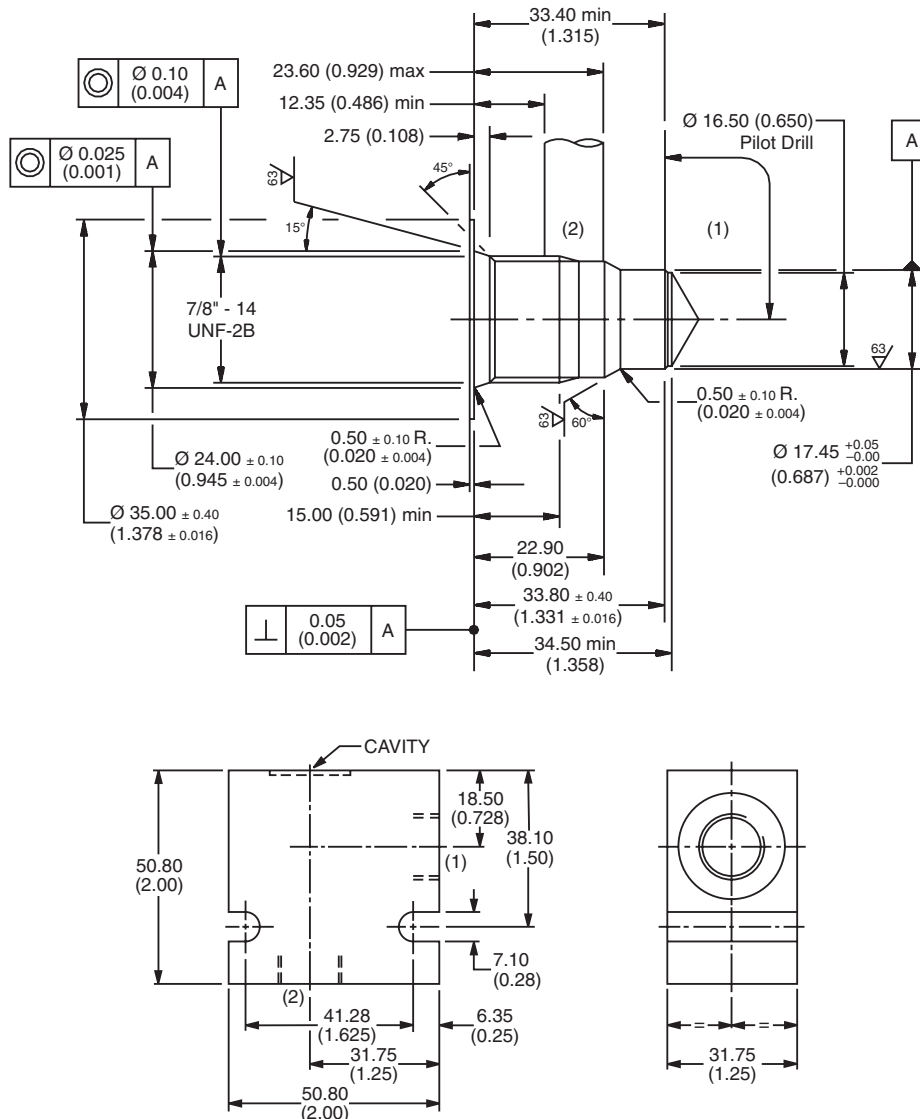
Code	Body Material
S	Steel

\*Please be advised that this is a non-core line body.  
 Additional lead-time and/or pricing requirements may exist when ordering.

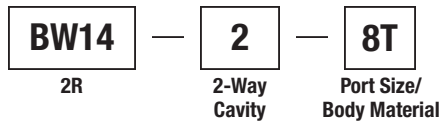
<b>CV</b>
Check Valves
<b>SH</b>
Shuttle Valves
<b>LM</b>
Load/Motor Controls
<b>FC</b>
Flow Controls
<b>PC</b>
Pressure Controls
<b>LE</b>
Logic Elements
<b>DC</b>
Directional Controls
<b>SV</b>
Solenoid Valves
<b>PV</b>
Proportional Valves
<b>CE</b>
Coils & Electronics
<b>BC</b>
Bodies & Cavities
<b>TD</b>
Technical Data

For additional information see Technical Tips on pages BC2-BC3.

**Dimensions**  
 Millimeters (Inches)



**Ordering Information**



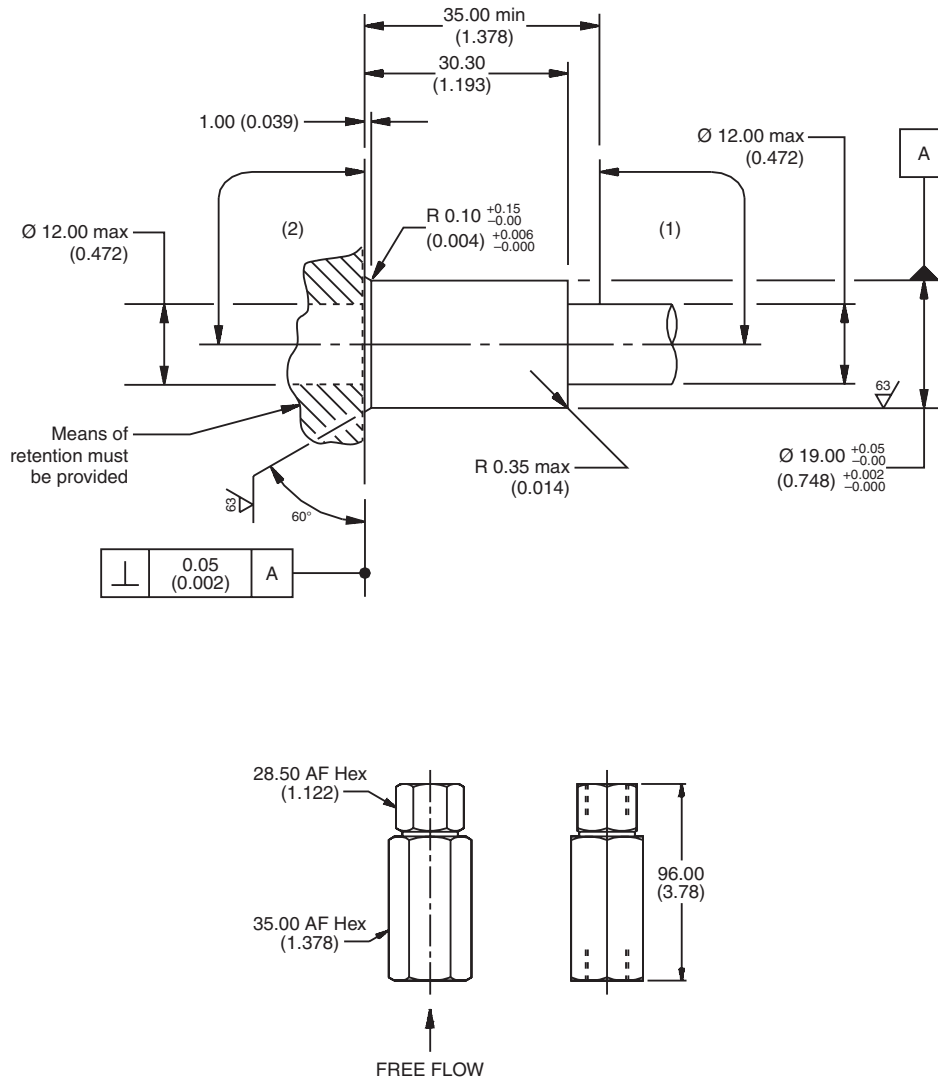
Code	Body Material
8T	SAE - 8/Steel (5000PSI)

\*Please be advised that this is a non-core line body.  
 Additional lead-time and/or pricing requirements may exist when ordering.

- CV Check Valves
- SH Shuttle Valves
- LM Load/Motor Controls
- FC Flow Controls
- PC Pressure Controls
- LE Logic Elements
- DC Directional Controls
- SV Solenoid Valves
- PV Proportional Valves
- CE Coils & Electronics
- BC Bodies & Cavities
- TD Technical Data

For additional information see Technical Tips on pages BC2-BC3.

**Dimensions**  
 Millimeters (Inches)



**Ordering Information**

<b>LB10</b>	<b>220</b>	<b>S</b>
Line Body	Port Size	Body Material

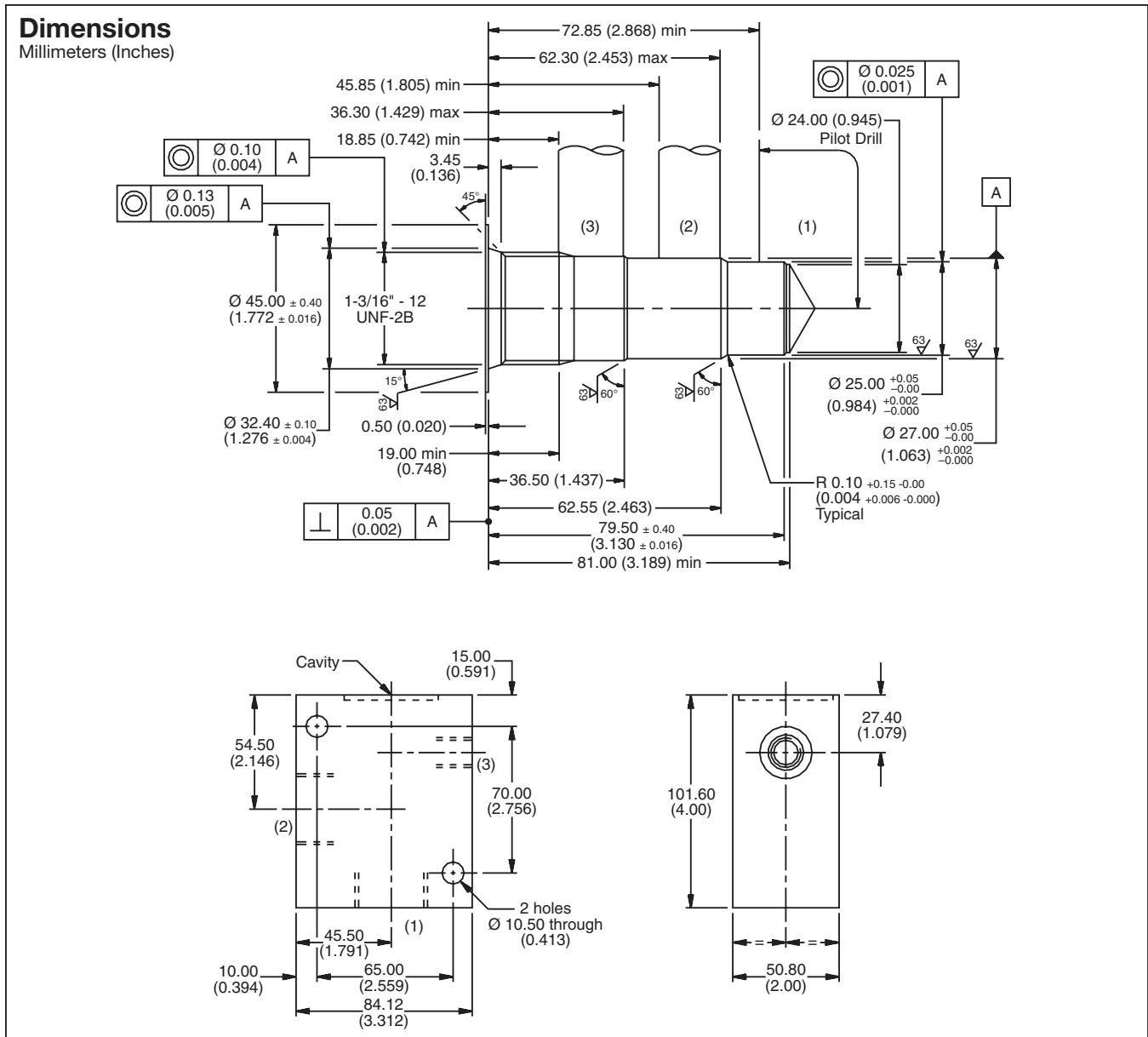
Code	Port Size
220	1 SAE

Code	Body Material
S	Steel

**\*Please be advised that this is a non-core line body.**  
 Additional lead-time and/or pricing requirements may exist when ordering.

- CV  
Check Valves
- SH  
Shuttle Valves
- LM  
Load/Motor Controls
- FC  
Flow Controls
- PC  
Pressure Controls
- LE  
Logic Elements
- DC  
Directional Controls
- SV  
Solenoid Valves
- PV  
Proportional Valves
- CE  
Coils & Electronics
- BC  
Bodies & Cavities
- TD  
Technical Data

For additional information see Technical Tips on pages BC2-BC3.



**Ordering Information**

<b>LB10</b>	<b>066</b>	<b>S</b>
Line Body	Port Size	Body Material

Code	Port Size
066	SAE16

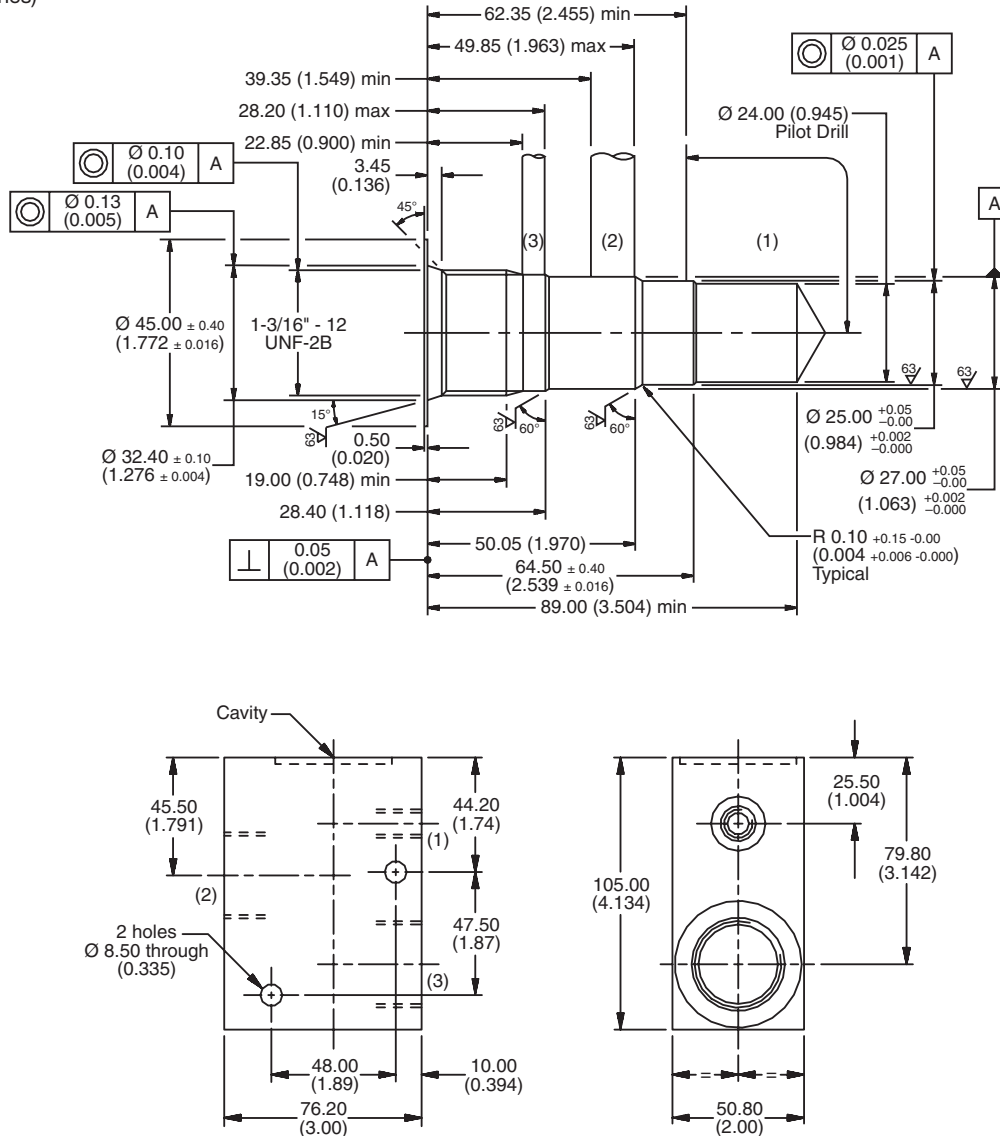
Code	Body Material
S	Steel

\*Please be advised that this is a non-core line body.  
 Additional lead-time and/or pricing requirements may exist when ordering.

CV
Check Valves
SH
Shuttle Valves
LM
Load/Motor Controls
FC
Flow Controls
PC
Pressure Controls
LE
Logic Elements
DC
Directional Controls
SV
Solenoid Valves
PV
Proportional Valves
CE
Coils & Electronics
BC
Bodies & Cavities
TD
Technical Data

For additional information see Technical Tips on pages BC2-BC3.

**Dimensions**  
 Millimeters (Inches)



**Ordering Information**

<b>LB10</b>	<b>069</b>	<b>S</b>
Line Body	Port Size	Body Material

Code	Port Size
069	1 SAE (Main) 1/4 SAE (Aux)

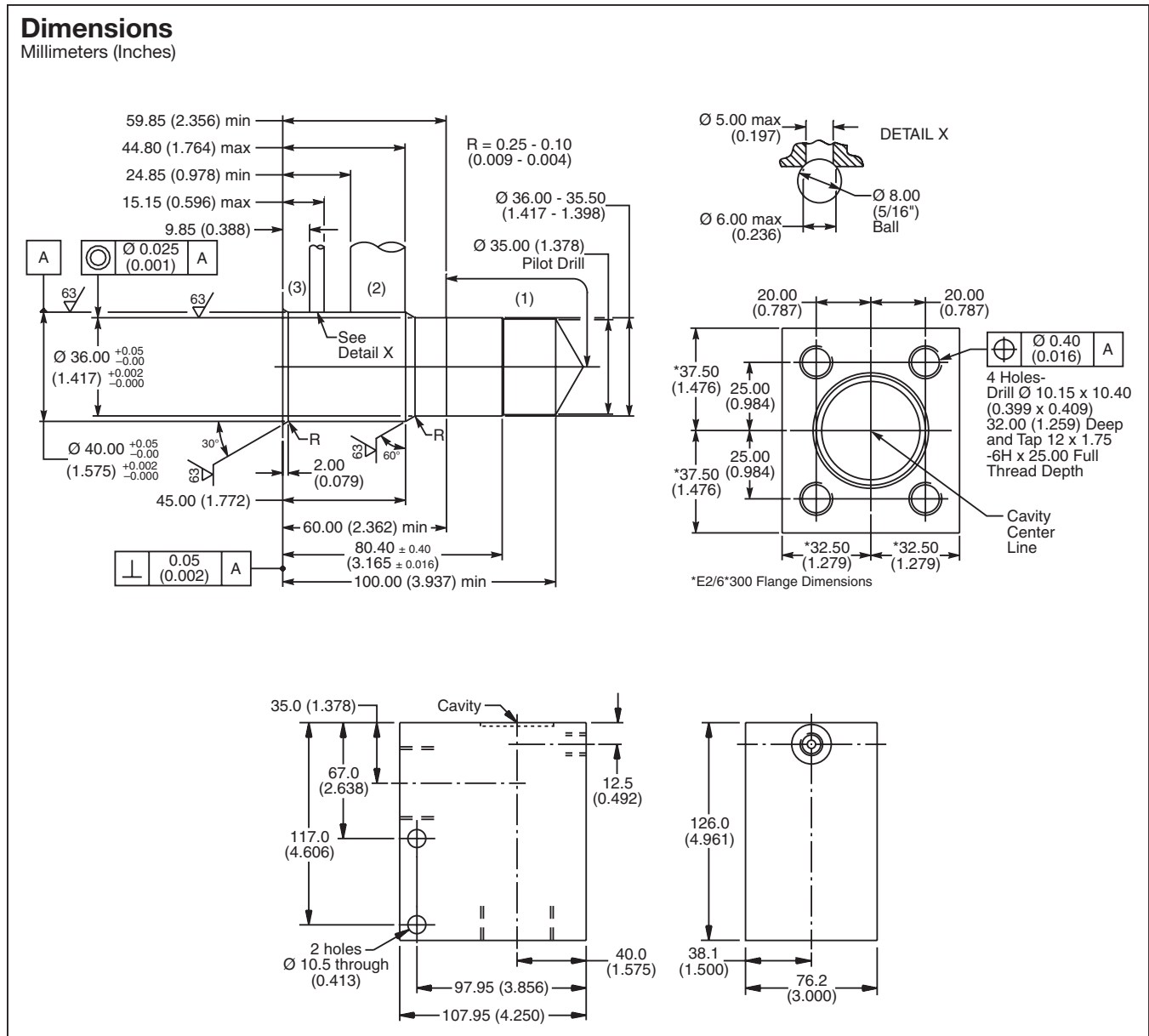
Code	Body Material
S	Steel

\*Please be advised that this is a non-core line body.  
 Additional lead-time and/or pricing requirements may exist when ordering.

- CV  
Check Valves
- SH  
Shuttle Valves
- LM  
Load/Motor Controls
- FC  
Flow Controls
- PC  
Pressure Controls
- LE  
Logic Elements
- DC  
Directional Controls
- SV  
Solenoid Valves
- PV  
Proportional Valves
- CE  
Coils & Electronics
- BC  
Bodies & Cavities
- TD  
Technical Data



For additional information see Technical Tips on pages BC2-BC3.



### Ordering Information

<b>LB10</b>	<b>089</b>	<b>S</b>
Line Body	Port Size	Body Material

Code	Port Size
089	1 SAE (Main) 1/4 SAE (Aux)

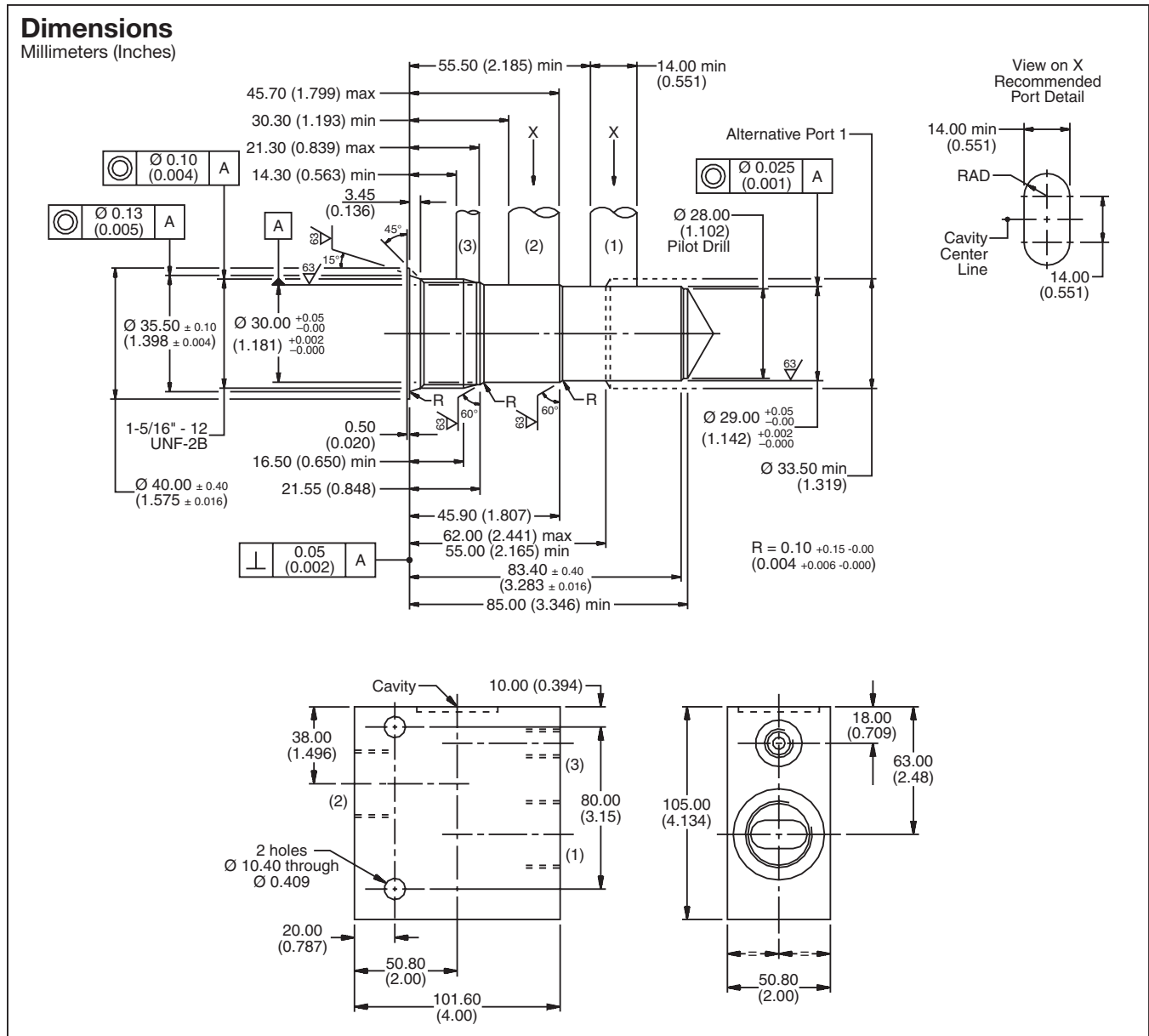
Code	Body Material
S	Steel

**\*Please be advised that this is a non-core line body.**  
**Additional lead-time and/or pricing requirements may exist when ordering.**

CV
Check Valves
SH
Shuttle Valves
LM
Load/Motor Controls
FC
Flow Controls
PC
Pressure Controls
LE
Logic Elements
DC
Directional Controls
SV
Solenoid Valves
PV
Proportional Valves
CE
Coils & Electronics
BC
Bodies & Cavities
TD
Technical Data



For additional information see Technical Tips on pages BC2-BC3.



### Ordering Information

<b>LB10</b>	<b>078</b>	<b>S</b>
Line Body	Port Size	Body Material

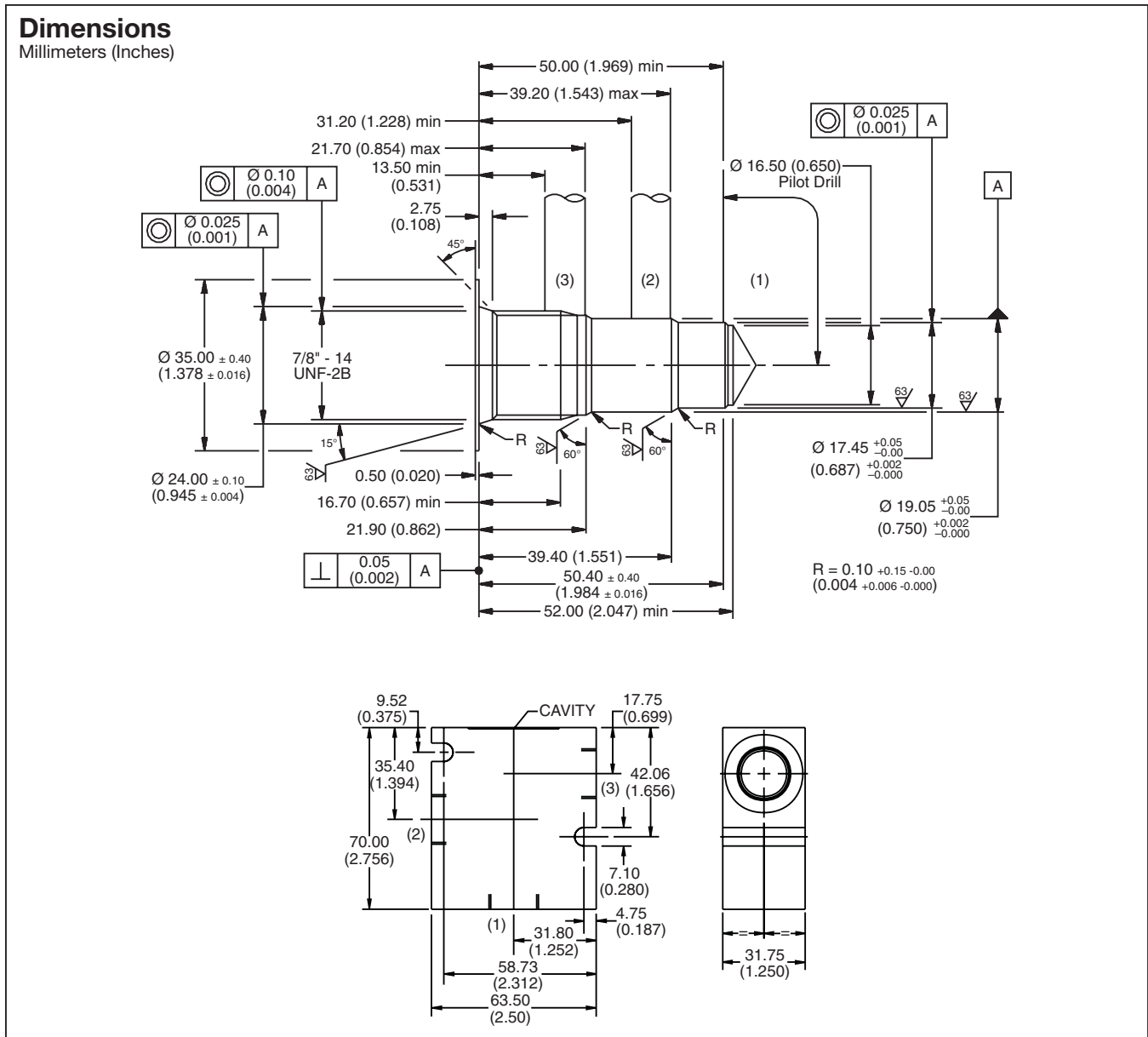
Code	Port Size
078	1 SAE (Main) 1/4 SAE (Aux)

Code	Body Material
S	Steel

**\*Please be advised that this is a non-core line body.**  
**Additional lead-time and/or pricing requirements may exist when ordering.**

- CV
- Check Valves
- SH
- Shuttle Valves
- LM
- Load/Motor Controls
- FC
- Flow Controls
- PC
- Pressure Controls
- LE
- Logic Elements
- DC
- Directional Controls
- SV
- Solenoid Valves
- PV
- Proportional Valves
- CE
- Coils & Electronics
- BC
- Bodies & Cavities
- TD
- Technical Data

For additional information see Technical Tips on pages BC2-BC3.



**Ordering Information**

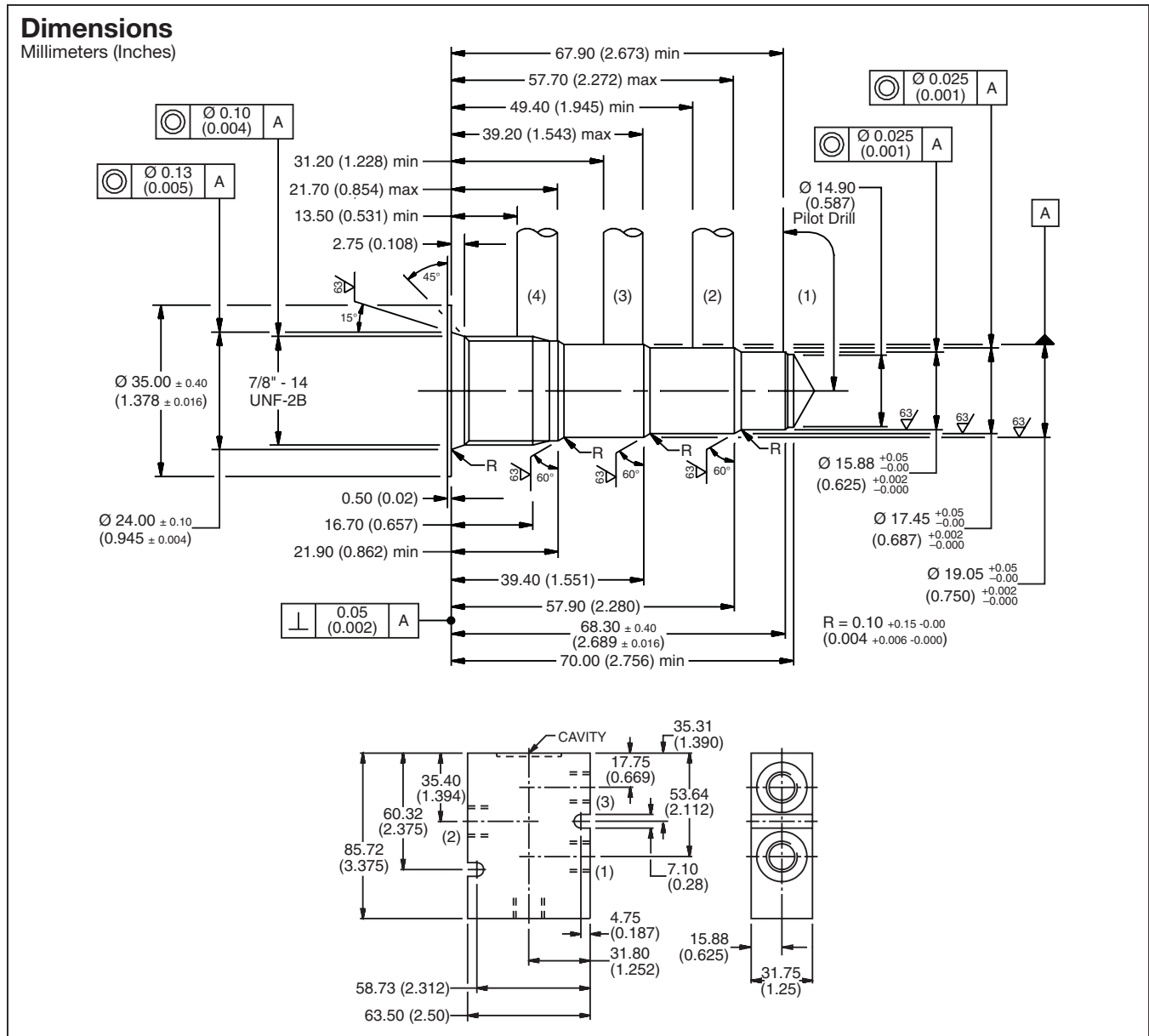
<b>LB10</b>	<b>553</b>	<b>S</b>
Line Body	Port Size	Body Material

Code	Port Size	Code	Body Material
553	1/2 SAE	S	Steel

**\*Please be advised that this is a non-core line body.**  
 Additional lead-time and/or pricing requirements may exist when ordering.

- CV  
Check Valves
- SH  
Shuttle Valves
- LM  
Load/Motor Controls
- FC  
Flow Controls
- PC  
Pressure Controls
- LE  
Logic Elements
- DC  
Directional Controls
- SV  
Solenoid Valves
- PV  
Proportional Valves
- CE  
Coils & Electronics
- BC  
Bodies & Cavities
- TD  
Technical Data

For additional information see Technical Tips on pages BC2-BC3.



**Ordering Information**

<b>LB10</b>	<b>562</b>	<b>S</b>
Line Body	Port Size	Body Material

Code	Port Size
562	1/2 SAE

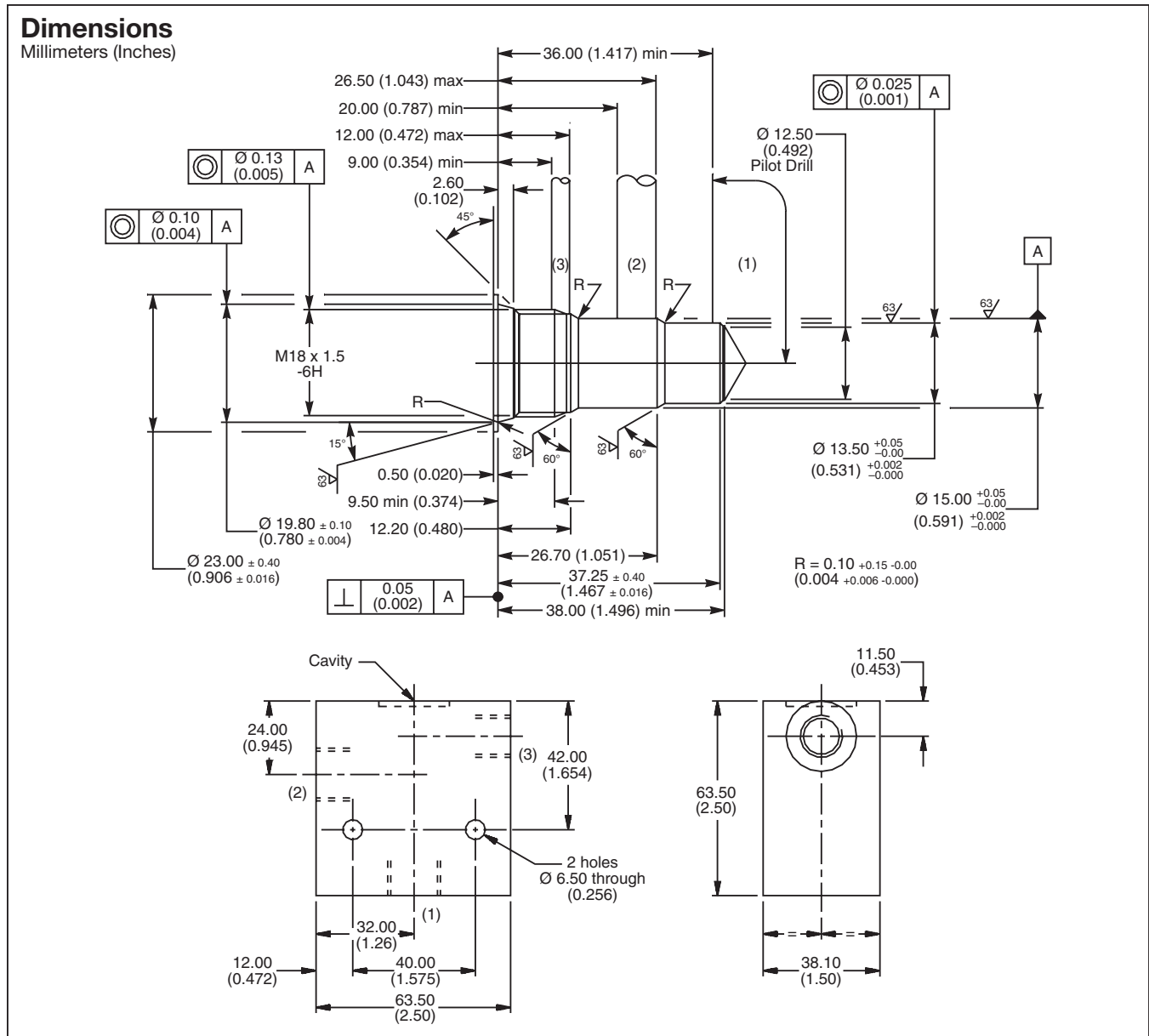
Code	Body Material
S	Steel

\*Please be advised that this is a non-core line body.  
 Additional lead-time and/or pricing requirements may exist when ordering.

- CV Check Valves
- SH Shuttle Valves
- LM Load/Motor Controls
- FC Flow Controls
- PC Pressure Controls
- LE Logic Elements
- DC Directional Controls
- SV Solenoid Valves
- PV Proportional Valves
- CE Coils & Electronics
- BC Bodies & Cavities
- TD Technical Data



For additional information see Technical Tips on pages BC2-BC3.



**Ordering Information**

<b>LB10</b>	<b>318</b>	<b>S</b>
Line Body	Port Size	Body Material

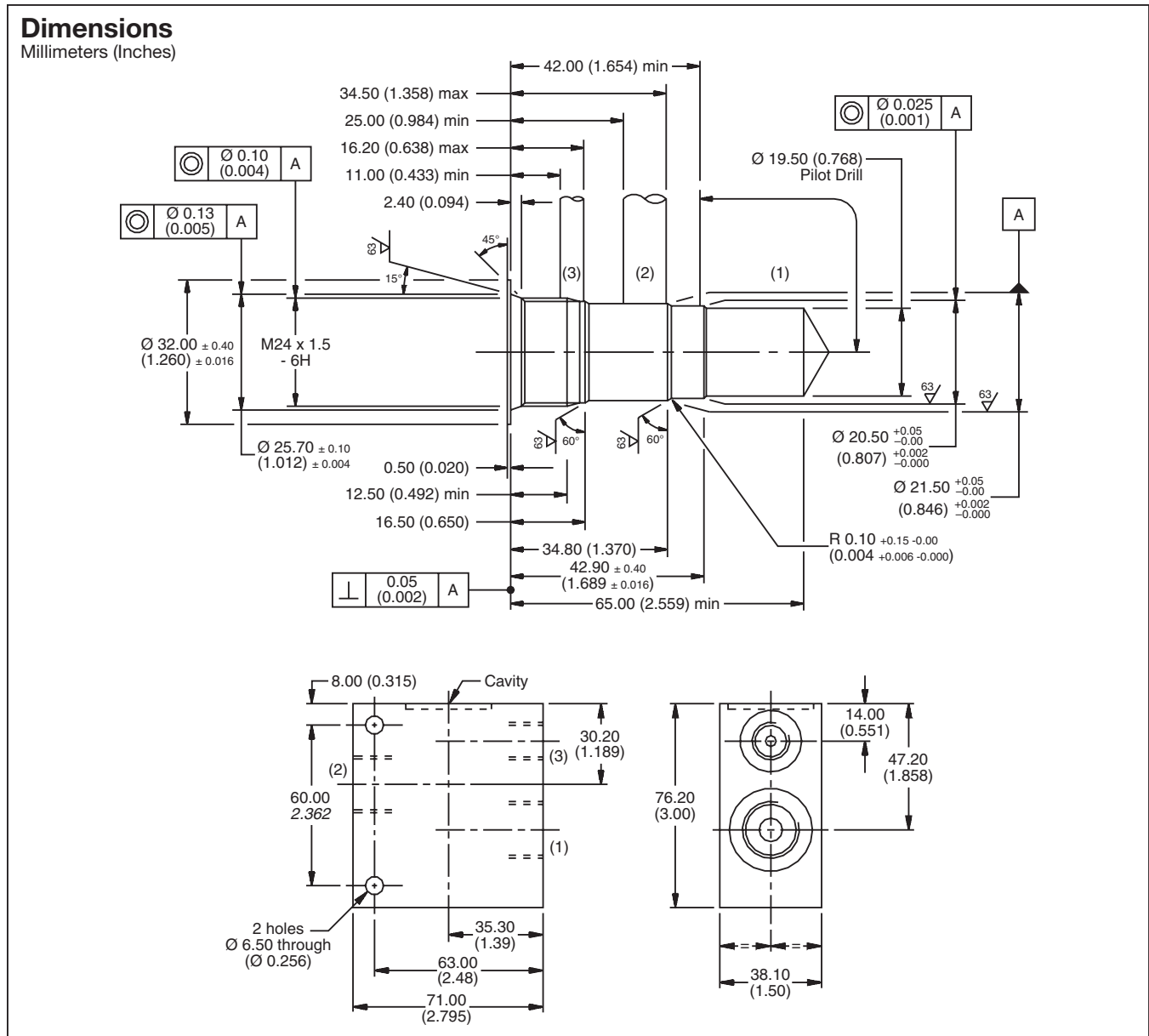
Code	Port Size
318	3/8 SAE (Main) 1/4 SAE (Aux)

Code	Body Material
S	Steel

\*Please be advised that this is a non-core line body.  
 Additional lead-time and/or pricing requirements may exist when ordering.

- CV  
Check Valves
- SH  
Shuttle Valves
- LM  
Load/Motor Controls
- FC  
Flow Controls
- PC  
Pressure Controls
- LE  
Logic Elements
- DC  
Directional Controls
- SV  
Solenoid Valves
- PV  
Proportional Valves
- CE  
Coils & Electronics
- BC  
Bodies & Cavities
- TD  
Technical Data

For additional information see Technical Tips on pages BC2-BC3.



**Ordering Information**

<b>LB10</b>	<b>253</b>	<b>S</b>
Line Body	Port Size	Body Material

Code	Port Size
253	1-1/4 SAE (Main) 3/8 SAE (Aux)

Code	Body Material
S	Steel

**\*Please be advised that this is a non-core line body.**  
 Additional lead-time and/or pricing requirements may exist when ordering.

- CV  
Check Valves
- SH  
Shuttle Valves
- LM  
Load/Motor Controls
- FC  
Flow Controls
- PC  
Pressure Controls
- LE  
Logic Elements
- DC  
Directional Controls
- SV  
Solenoid Valves
- PV  
Proportional Valves
- CE  
Coils & Electronics
- BC  
Bodies & Cavities
- TD  
Technical Data

